

epsilon Tubulin Monoclonal Antibody

catalog number: E-AB-22237

Note: Centrifuge before opening to ensure complete recovery of vial contents.

Description

Reactivity	Human;Mouse;Rat
Immunogen	Synthetic Peptide of Epsilon Tubulin
Host	Mouse
Isotype	IgG
Clone	3C1
Purification	Protein A purification
Conjugation	Unconjugated
Buffer	Phosphate buffered solution, pH 7.4, containing 0.05% stabilizer, 0.5% protein protectant and 50% glycerol.

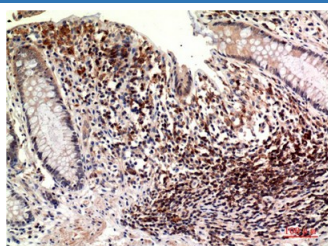
Applications

Recommended Dilution

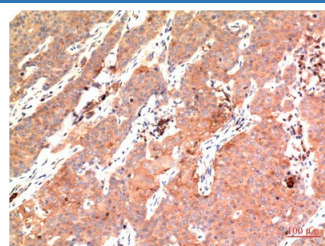
IHC

1:100-200

Data



Immunohistochemistry of paraffin-embedded Human colon carcinoma tissue using Epsilon Tubulin Monoclonal Antibody at dilution of 1:200.



Immunohistochemistry of paraffin-embedded Human breast carcinoma tissue using Epsilon Tubulin Monoclonal Antibody at dilution of 1:200.

Preparation & Storage

Storage	Store at -20°C Valid for 12 months. Avoid freeze / thaw cycles.
Shipping	The product is shipped with ice pack, upon receipt, store it immediately at the temperature recommended.

Background

This gene encodes a member of the tubulin superfamily. This protein localizes to the centriolar sub-distal appendages that are associated with the older of the two centrioles after centrosome duplication. This protein plays a central role in organization of the microtubules during centriole duplication. A pseudogene of this gene is found on chromosome 5. TUBE1 (Tubulin Epsilon 1) is a Protein Coding gene. Diseases associated with TUBE1 include Chronic Frontal Sinusitis and Frontal Sinusitis. Among its related pathways are Sertoli-Sertoli Cell Junction Dynamics and Chks in Checkpoint Regulation. GO annotations related to this gene include GTP binding and structural constituent of cytoskeleton. An important paralog of this gene is TUBB4B.

For Research Use Only