

## AMBP Polyclonal Antibody

catalog number: E-AB-40503

**Note:** Centrifuge before opening to ensure complete recovery of vial contents.

### Description

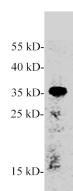
<b>Reactivity</b>	Human;Zebrafish
<b>Immunogen</b>	Recombinant human AMBP protein expressed by E.coli
<b>Host</b>	Rabbit
<b>Isotype</b>	IgG
<b>Purification</b>	Antigen Affinity Purification
<b>Conjugation</b>	Unconjugated
<b>Buffer</b>	PBS with 0.05% Proclin300, 1% protective protein and 50% glycerol, pH7.4

### Applications

### Recommended Dilution

<b>WB</b>	1:1000-2000
-----------	-------------

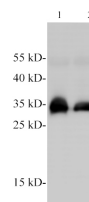
### Data



Western blot of Zebrafish whole lysates with anti-AMBP rabbit polyclonal antibody at dilution of 1:1000.

**Observed-MW:39 kDa**

**Calculated-MW:39 kDa**



Western blotting of anti-AMBP polyclonal antibody at dilution of 1:2000. Lane1: Human plasma, Lane2: Human serum.

**Observed-MW:39 kDa**

**Calculated-MW:39 kDa**

### Preparation & Storage

<b>Storage</b>	Store at -20°C Valid for 12 months. Avoid freeze / thaw cycles.
<b>Shipping</b>	The product is shipped with ice pack, upon receipt, store it immediately at the temperature recommended.

### Background

AMBP, alpha-1-microglobulin/bikunin precursor, has been reported to interact with albumin. The plasma concentration of albumin-AMBP was estimated to be 5.2 mg/L. alpha 1 Microglobulin runs at approximately 27 kDa under reducing conditions and as a dimer at