

SLC34A3 Polyclonal Antibody

catalog number: E-AB-66709

Note: Centrifuge before opening to ensure complete recovery of vial contents.

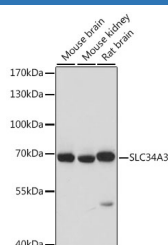
Description

Reactivity	Human;Mouse;Rat
Immunogen	Recombinant fusion protein of human SLC34A3 (NP_543153.1).
Host	Rabbit
Isotype	IgG
Purification	Affinity purification
Buffer	Phosphate buffered solution, pH 7.4, containing 0.05% stabilizer and 50% glycerol.

Applications

WB	1:500-1:2000
-----------	--------------

Data



Western blot analysis of extracts of various cell lines using SLC34A3 Polyclonal Antibody at dilution of 1:1000.

Observed-MW:63 kDa

Calculated-MW:63 kDa

Preparation & Storage

Storage	Store at -20°C Valid for 12 months. Avoid freeze / thaw cycles.
Shipping	The product is shipped with ice pack, upon receipt, store it immediately at the temperature recommended.

Background

This gene encodes a member of SLC34A transporter family of proteins, and is expressed primarily in the kidney. It is involved in transporting phosphate into cells via sodium cotransport in the renal brush border membrane, and contributes to the maintenance of inorganic phosphate concentration in the kidney. Mutations in this gene are associated with hereditary hypophosphatemic rickets with hypercalciuria. Alternatively spliced transcript variants varying in the 5' UTR have been found for this gene.

For Research Use Only