

# ACT $\alpha$ 2 Polyclonal Antibody

catalog number: D-AB-10442L

**Note:** Centrifuge before opening to ensure complete recovery of vial contents.

## Description

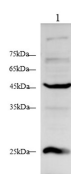
<b>Reactivity</b>	Human
<b>Immunogen</b>	Recombinant Mouse ACT $\alpha$ 2 protein expressed by E.coli
<b>Host</b>	Rabbit
<b>Isotype</b>	IgG
<b>Purification</b>	Antigen Affinity Purification
<b>Conjugation</b>	Unconjugated
<b>buffer</b>	PBS with 0.05% proclin 300, 1% protective protein and 50% glycerol,pH7.4

## Applications

## Recommended Dilution

<b>WB</b>	1:500-1:1000
-----------	--------------

## Data



Western blot with ACT $\alpha$ 2 Polyclonal antibody at dilution of 1:1000.lane 1:Hela whole cell lysate

**Observed-MV:42 kDa**

**Calculated-MV:42 kDa**

## Preparation & Storage

<b>Storage</b>	Store at -20°C Valid for 12 months. Avoid freeze / thaw cycles.
<b>Shipping</b>	The product is shipped with ice pack,upon receipt,store it immediately at the temperature recommended.

## Background

alpha-2-macroglobulin,also known as  $\alpha$ 2-macroglobulin( $\alpha$ 2M and A2M),is an abundant protein of the plasma of vertebrates and members of several invertebrate phyla and functions as a broad-spectrum protease-binding protein. alpha-2-macroglobulin is produced by the liver,and is a major component of the alpha-2 band in protein electrophoresis. alpha-2-macroglobulin is a large plasma glycoprotein that has long been known as an irreversible inhibitor of a variety of proteinases. More recently,it has been reported that numerous growth factors,cytokines and hormones bind to alpha 2M through diverse mechanisms. A2M is also produced in the brain where it binds multiple extracellular ligands and is internalized by neurons and astrocytes. In the brain of Alzheimer's disease (AD) patients,A2M has been localized to diffuse amyloid plaques. A2M also binds soluble beta-amyloid,of which it mediates degradation. Protease-conjugated alpha2-macroglobulin is selectively bound by cells contacting the body fluids and alpha2-macroglobulin and its protease cargo are then internalized and degraded in secondary lysosomes of those cells. In addition to this function as an agent for protease clearance,alpha2-macroglobulin binds a variety of other ligands,including several peptide growth factors and modulates the activity of a lectin-dependent cytolytic pathway in arthropods.

## For Research Use Only