

## PEMT Polyclonal Antibody

catalog number: E-AB-18144

**Note:** Centrifuge before opening to ensure complete recovery of vial contents.

### Description

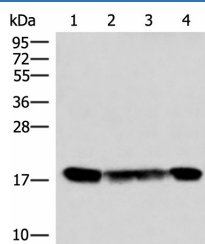
Reactivity	Human;Mouse
Immunogen	Synthetic peptide of human PEMT
Host	Rabbit
Isotype	IgG
Purification	Antigen affinity purification
Conjugation	Unconjugated
Buffer	Phosphate buffered solution, pH 7.4, containing 0.05% stabilizer and 50% glycerol.

### Applications

### Recommended Dilution

WB	1:1000-1:5000
IHC	1:50-1:300

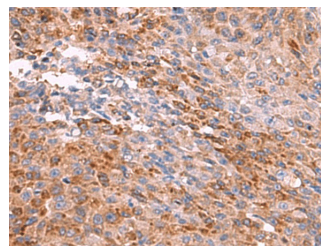
### Data



Western blot analysis of 293T and 231 cell lysates using PEMT Polyclonal Antibody at dilution of 1:800

**Observed-MV:Refer to figures**

**Calculated-MV:22 kDa**



Immunohistochemistry of paraffin-embedded Human colorectal cancer tissue using PEMT Polyclonal Antibody at dilution of 1:55(×200)

### Preparation & Storage

Storage	Store at -20°C Valid for 12 months. Avoid freeze / thaw cycles.
Shipping	The product is shipped with ice pack, upon receipt, store it immediately at the temperature recommended.

### Background

Phosphatidylcholine (PC) is the most abundant mammalian phospholipid. This gene encodes an enzyme which converts phosphatidylethanolamine to phosphatidylcholine by sequential methylation in the liver. Another distinct synthetic pathway in nucleated cells converts intracellular choline to phosphatidylcholine by a three-step process. The protein isoforms encoded by this gene localize to the endoplasmic reticulum and mitochondria-associated membranes. Alternate splicing of this gene results in multiple transcript variants encoding different isoforms.