

## Cytochrome b Polyclonal Antibody

catalog number: E-AB-16373

**Note:** Centrifuge before opening to ensure complete recovery of vial contents.

### Description

Reactivity	Human
Immunogen	Synthetic peptide of human MT-CYB
Host	Rabbit
Isotype	IgG
Purification	Affinity purification
Conjugation	Unconjugated
Buffer	Phosphate buffered solution, pH 7.4, containing 0.05% stabilizer and 50% glycerol.

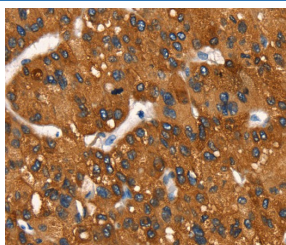
### Applications

### Recommended Dilution

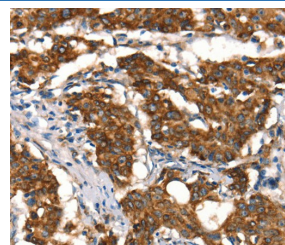
IHC

1:50-1:200

### Data



Immunohistochemistry of paraffin-embedded Human liver cancer tissue using Cytochrome b Polyclonal Antibody at dilution 1:50



Immunohistochemistry of paraffin-embedded Human gastric cancer tissue using Cytochrome b Polyclonal Antibody at dilution 1:50

### Preparation & Storage

Storage	Store at -20°C Valid for 12 months. Avoid freeze / thaw cycles.
Shipping	The product is shipped with ice pack, upon receipt, store it immediately at the temperature recommended.

### Background

Cytochrome b is a component of the ubiquinol-cytochrome c reductase complex, which is a respiratory chain that generates an electrochemical potential, coupled to ATP synthesis. The principal components of the b-c1 complex are cytochrome b, cytochrome c1, and the Rieske protein. Cytochrome b possesses two heme groups, which are not covalently attached to the protein. Mutations in cytochrome b are associated with Leber's hereditary optic neuropathy and with myopathy.