

STX10 Polyclonal Antibody

Catalog Number: E-AB-11625



Note: Centrifuge before opening to ensure complete recovery of vial contents.

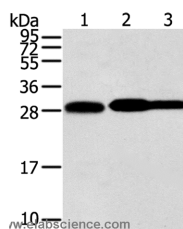
Description

Reactivity	Human
Immunogen	Recombinant protein of human STX10
Host	Rabbit
Isotype	IgG
Purification	Affinity purification
Conjugation	Unconjugated
Formulation	PBS with 0.05% sodium azide and 50% glycerol, PH7.4

Applications Recommended Dilution

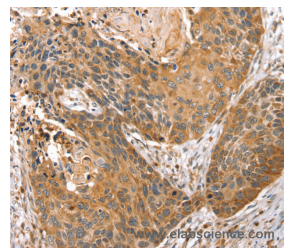
WB	1:1000-1:5000
IHC	1:25-1:100

Data

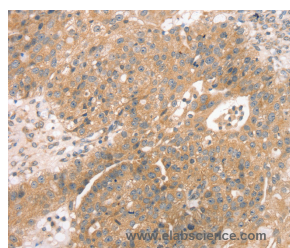


Western Blot analysis of HeLa, Iovo and A431 cell using STX10 Polyclonal Antibody at dilution of 1:800

Calculated Mw: 28kDa



Immunohistochemistry of paraffin-embedded Human esophagus cancer using STX10 Polyclonal Antibody at dilution of 1:45



Immunohistochemistry of paraffin-embedded Human breast cancer using STX10 Polyclonal Antibody at dilution of 1:45

Preparation & Storage

Storage Store at -20°C. Avoid freeze / thaw cycles.

Background

This gene belongs to the syntaxin family and encodes a soluble N-ethylmaleimide sensitive factor attachment protein receptor (SNARE). The encoded protein is involved in docking and fusion events at the Golgi apparatus. Alternative splicing results in multiple transcript variants.

For Research Use Only

A Reliable Research Partner in Life Science and Medicine

Toll-free: 1-888-852-8623

Web: www.elabscience.com

Tel: 1-832-243-6086

Email: techsupport@elabscience.com

Fax: 1-832-243-6017