

# ARFGAP2 Polyclonal Antibody

Catalog Number: E-AB-17647



**Note:** Centrifuge before opening to ensure complete recovery of vial contents.

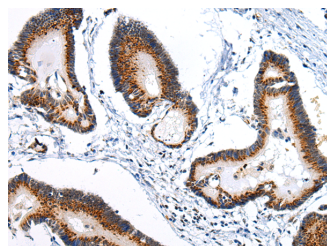
## Description

<b>Reactivity</b>	Human, Mouse, Rat
<b>Immunogen</b>	Synthetic peptide of human ARFGAP2
<b>Host</b>	Rabbit
<b>Isotype</b>	IgG
<b>Purification</b>	Affinity purification
<b>Conjugation</b>	Unconjugated
<b>Formulation</b>	PBS with 0.05% sodium azide and 50% glycerol, PH7.4

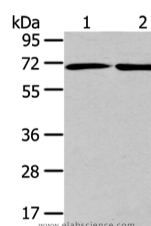
## Applications Recommended Dilution

<b>WB</b>	1:500-2000
<b>IHC</b>	1:20-100
<b>ELISA</b>	1:2000-5000

## Data



Immunohistochemistry of paraffin-embedded Human colorectal cancer using ARFGAP2 Polyclonal Antibody at dilution of 1/25  
**Calculated Mw: 57 kDa**



Western Blot analysis of A431 and hela cell using ARFGAP2 Polyclonal Antibody at dilution of 1/200

## Preparation & Storage

**Storage** Store at -20°C. Avoid freeze / thaw cycles.

## Background

ZNF289 (zinc finger protein 289), also known as ARFGAP2 (ADP-ribosylation factor GTPase activating protein 2), IRZ, Zfp289 or Nbla10535, functions as a GTPase-activating protein (GAP) for ARF family proteins. Localizing to the cytoplasmic side of the Golgi apparatus, ZNF289 contains one ARF-GAP domain and is found associated with COP-I-coated vesicles.

## For Research Use Only

A Reliable Research Partner in Life Science and Medicine

Toll-free: 1-888-852-8623

Web: [www.elabscience.com](http://www.elabscience.com)

Tel: 1-832-243-6086

Email: [techsupport@elabscience.com](mailto:techsupport@elabscience.com)

Fax: 1-832-243-6017