

Recombinant Mouse L-Selectin/SELL Protein (His Tag)

Catalog Number: PKSM041308

Note: Centrifuge before opening to ensure complete recovery of vial contents.

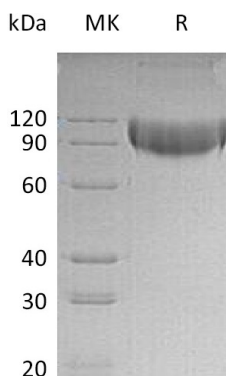
Description

Species	Mouse
Source	HEK293 Cells-derived Mouse L-Selectin/SELL protein Trp39-Asn332, with an C-terminal His
Calculated MW	61 kDa
Observed MW	80-120 kDa
Accession	P18337
Bio-activity	Not validated for activity

Properties

Purity	> 95 % as determined by reducing SDS-PAGE.
Endotoxin	< 1.0 EU per µg of the protein as determined by the LAL method.
Storage	Generally, lyophilized proteins are stable for up to 12 months when stored at -20 to -80°C. Reconstituted protein solution can be stored at 4-8°C for 2-7 days. Aliquots of reconstituted samples are stable at < -20°C for 3 months.
Shipping	This product is provided as lyophilized powder which is shipped with ice packs.
Formulation	Lyophilized from a 0.2 µm filtered solution of 20mM PB, 150mM NaCl, pH7.4. Normally 5% - 8% trehalose, mannitol and 0.01% Tween 80 are added as protectants before lyophilization.
	Please refer to the specific buffer information in the printed manual.
Reconstitution	Please refer to the printed manual for detailed information.

Data



Background

L-Selectin is a member of a family of Selectin that is transiently expressed on vascular endothelial cells in response to IL-1 beta and TNF-alpha. L-Selectin (Leukocyte Selectin, LAM-1, LECAM-1, LECCAM-1, TQ1, Leu-8, MEL-14 antigen, DREG, lymph node homing receptor, CD62L) is expressed constitutively on a wide variety of leukocytes and mediates a number of leukocyte-endothelial interactions, including the binding of lymphocytes to HEV of peripheral lymph node high endothelial venules (HEV), neutrophil rolling, and leukocyte attachment to cytokine-treated endothelium in vitro.

For Research Use Only