

Recombinant Human SLAMF6/Ly108 Protein (aa 28-225, His Tag)

Catalog Number: PKSH033521

Note: Centrifuge before opening to ensure complete recovery of vial contents.

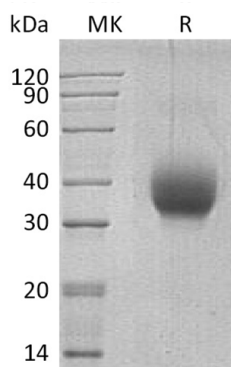
Description

Species	Human
Source	HEK293 Cells-derived Human SLAMF6/Ly108 protein Leu28-Lys225, with an C-terminal His
Calculated MW	23.4 kDa
Observed MW	30-50 kDa
Accession	Q96DU3
Bio-activity	Not validated for activity

Properties

Purity	> 95 % as determined by reducing SDS-PAGE.
Endotoxin	< 1.0 EU per µg of the protein as determined by the LAL method.
Storage	Generally, lyophilized proteins are stable for up to 12 months when stored at -20 to -80 °C. Reconstituted protein solution can be stored at 4-8°C for 2-7 days. Aliquots of reconstituted samples are stable at < -20°C for 3 months.
Shipping	This product is provided as lyophilized powder which is shipped with ice packs.
Formulation	Lyophilized from a 0.2 µm filtered solution of 20mM PB, 150mM NaCl, pH 7.4. Normally 5% - 8% trehalose, mannitol and 0.01% Tween 80 are added as protectants before lyophilization.
Reconstitution	Please refer to the specific buffer information in the printed manual.

Data



> 95 % as determined by reducing SDS-PAGE.

Background

SLAM Family Member 6 (SLAMF6) is a 60 kD single-pass type I membrane protein that belongs to the SLAM subgroup of the CD2 family. Human SLAMF6/ NTB-A contains a 205 amino acid extracellular domain (ECD) with one Ig-like V-set and one Ig-like C2-set domain; a 21 amino acid transmembrane segment and an 84 amino acid cytoplasmic domain; with two immunoreceptor tyrosine-based switch motifs. SLAMF6 is a homodimer. SLAMF6 can interact with PTN6 and; upon phosphorylation; with PTN11 and SH2D1A/SAP. Phosphorylation-dependent NTB-A association with SAP is required for full production of IFN- γ by NK cells and independent of EAT-2 binding. It Triggers cytolytic activity only in natural killer cells (NK) expressing high surface densities of natural cytotoxicity receptors. On B cells; NTB-A modulates immunoglobulin class switching and the balance between tolerance and autoimmunity.