

H2-Aa Polyclonal Antibody

Catalog Number: E-AB-92020



Note: Centrifuge before opening to ensure complete recovery of vial contents.

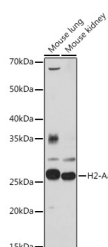
Description

Reactivity	Human, Mouse
Immunogen	Recombinant fusion protein of mouse H2-Aa
Host	Rabbit
Isotype	IgG
Purification	Affinity purification
Conjugation	Unconjugated
Formulation	PBS with 0.01% thiomersal, 50% glycerol, pH 7.3.

Applications Recommended Dilution

WB	1:500-1:2000
-----------	--------------

Data



Western blot analysis of extracts of various cell lines using H2-Aa Polyclonal Antibody at 1:1000 dilution.

Observed MW: 28KDa

Calculated Mw: 28kDa

Preparation & Storage

Storage Store at -20°C. Avoid freeze/thaw cycles.

Background

Enables peptide antigen binding activity. Involved in response to interferon-gamma. Acts upstream of or within antigen processing and presentation of exogenous peptide antigen via MHC class II and positive regulation of T cell differentiation. Located in external side of plasma membrane and lysosome. Part of MHC class II protein complex. Is expressed in central nervous system; retina; and thymus primordium. Human ortholog(s) of this gene implicated in several diseases, including autoimmune disease (multiple); gastrointestinal system cancer (multiple); glomerulonephritis (multiple); hematologic cancer (multiple); and systemic scleroderma (multiple). Orthologous to several human genes including HLA-DQA1 (major histocompatibility complex, class II, DQ alpha 1).

For Research Use Only

A Reliable Research Partner in Life Science and Medicine

Toll-free: 1-888-852-8623

Web: www.elabscience.com

Tel: 1-832-243-6086

Email: techsupport@elabscience.com

Fax: 1-832-243-6017