

## Cystatin 7/CST7 Monoclonal Antibody

catalog number: **AN200167P**

**Note:** Centrifuge before opening to ensure complete recovery of vial contents.

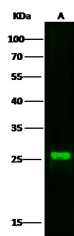
### Description

<b>Reactivity</b>	Human
<b>Immunogen</b>	Recombinant Human CST7 protein
<b>Host</b>	Mouse
<b>Isotype</b>	IgG1
<b>Clone</b>	6C6
<b>Purification</b>	Protein A
<b>Buffer</b>	0.2 µm filtered solution in PBS

### Applications Recommended Dilution

<b>WB</b>	1:500-1:1000
-----------	--------------

### Data



Western Blot with CST7 Monoclonal Antibody at dilution of 1:500 dilution. Lane A: A549 Whole Cell Lysate, Lane B: MCF7 Whole Cell Lysate, Lysates/proteins at 30 µg per lane.

**Observed-MW:27 kDa**

**Calculated-MW:21 kDa**

### Preparation & Storage

**Storage** This antibody can be stored at 2°C-8°C for one month without detectable loss of activity. Antibody products are stable for twelve months from date of receipt when stored at -20°C to -80°C. Preservative-Free. Avoid repeated freeze-thaw cycles.

**Shipping** Ice bag

### Background

The cystatin superfamily encompasses proteins that contain multiple cystatin-like sequences. Some of the members are active cysteine protease inhibitors, while others have lost or perhaps never acquired this inhibitory activity. There are three inhibitory families in the superfamily, including the type 1 cystatins (stefins), type 2 cystatins and the kininogens. The type 2 cystatin proteins are a class of cysteine proteinase inhibitors found in a variety of human fluids and secretions. This gene encodes a glycosylated cysteine protease inhibitor with a putative role in immune regulation through inhibition of a unique target in the hematopoietic system. Expression of the protein has been observed in various human cancer cell lines established from malignant tumors.

### For Research Use Only

Toll-free: 1-888-852-8623  
Web: [www.elabscience.com](http://www.elabscience.com)

Tel: 1-832-243-6086  
Email: [techsupport@elabscience.com](mailto:techsupport@elabscience.com)

Fax: 1-832-243-6017

Rev. V1.0