

# Purified Anti-Mouse Ly-6G/Ly-6C (Gr-1) Antibody[RB6-8C5]



catalog number: E-AB-F1120A

**Note:** Centrifuge before opening to ensure complete recovery of vial contents.

## Description

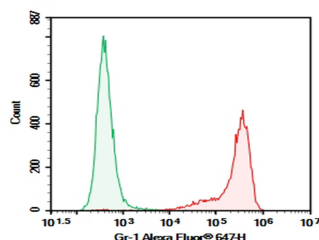
<b>Reactivity</b>	Mouse
<b>Immunogen</b>	Recombinant Mouse Gr-1 protein
<b>Host</b>	Rat
<b>Isotype</b>	Rat IgG2b, $\kappa$
<b>Clone</b>	RB6-8C5
<b>Purification</b>	>98%, Protein A/G purified
<b>Conjugation</b>	Unconjugated
<b>buffer</b>	PBS, pH 7.2. Contains 0.05% proclin 300.

## Applications

## Recommended Dilution

<b>FCM</b>	2 $\mu\text{g/mL}$ ( $1 \times 10^5$ - $5 \times 10^5$ cells)
------------	---

## Data



C57BL/6 Mouse bone marrow cells were stained with 0.2  $\mu\text{g}$  Purified Anti-Mouse Ly-6G/Ly-6C (Gr-1) Antibody[RB6-8C5](Right) and 0.2  $\mu\text{g}$  Rat IgG2b,  $\kappa$  Isotype Control(Left), followed by Alexa Fluor<sup>®</sup> 647-conjugated Goat Anti-Rat IgG Secondary Antibody.

## Preparation & Storage

<b>Storage</b>	Store at 4°C valid for 12 months or -20°C valid for long term storage, avoid freeze / thaw cycles.
<b>Shipping</b>	Ice bag

## Background

Gr-1 is a 21-25 kD protein also known as Ly-6G/Ly-6C. This myeloid differentiation antigen is a glycosylphosphatidylinositol (GPI)-linked protein expressed on granulocytes and macrophages. In bone marrow, the expression levels of Gr-1 directly correlate with granulocyte differentiation and maturation; Gr-1 is also transiently expressed on bone marrow cells in the monocyte lineage. Immature Myeloid Gr-1+ cells play a role in the development of antitumor immunity.

## For Research Use Only

A Reliable Research Partner in Life Science and Medicine  
Tel: 400-999-2100

Email: [techsupport@elabscience.cn](mailto:techsupport@elabscience.cn)

Web: [www.elabscience.cn](http://www.elabscience.cn)

Rev. V2.3