

SLC52A3 Polyclonal Antibody

catalog number: **E-AB-91358**

Note: Centrifuge before opening to ensure complete recovery of vial contents.

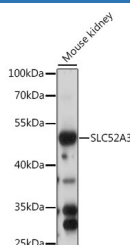
Description

Reactivity	Mouse
Immunogen	A synthetic peptide of human SLC52A3
Host	Rabbit
Isotype	IgG
Purification	Affinity purification
Buffer	Phosphate buffered solution, pH 7.4, containing 0.05% stabilizer and 50% glycerol.

Applications

WB	1:500-1:2000
-----------	--------------

Data



Western blot analysis of extracts of mouse kidney using SLC52A3 Polyclonal Antibody at 1:1000 dilution.

Observed-MV:51 kDa

Calculated-MV:45 kDa/50 kDa

Preparation & Storage

Storage	Store at -20°C Valid for 12 months. Avoid freeze / thaw cycles.
Shipping	The product is shipped with ice pack, upon receipt, store it immediately at the temperature recommended.

Background

This gene encodes a riboflavin transporter protein that is strongly expressed in the intestine and likely plays a role in intestinal absorption of riboflavin. The protein is predicted to have eleven transmembrane domains and a cell surface localization signal in the C-terminus. Mutations at this locus have been associated with Brown-Vialetto-Van Laere syndrome and Fazio-Londe disease.

For Research Use Only