

## ETAA1 Polyclonal Antibody

**catalog number: E-AB-17925**

**Note:** Centrifuge before opening to ensure complete recovery of vial contents.

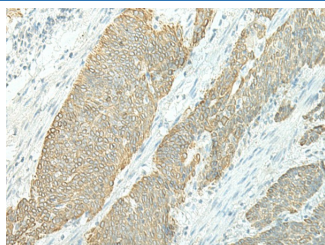
### Description

<b>Reactivity</b>	Human
<b>Immunogen</b>	Synthetic peptide of human ETAA1
<b>Host</b>	Rabbit
<b>Isotype</b>	IgG
<b>Purification</b>	Antigen affinity purification
<b>Buffer</b>	Phosphate buffered solution, pH 7.4, containing 0.05% stabilizer and 50% glycerol.

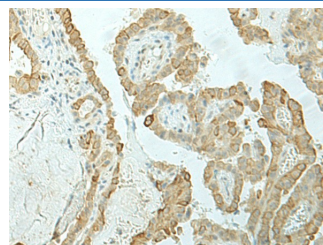
### Applications

Applications	Recommended Dilution
IHC	1:30-1:150

### Data



Immunohistochemistry of paraffin-embedded Human esophagus cancer tissue using ETAA1 Polyclonal Antibody at dilution of 1:25(×200)



Immunohistochemistry of paraffin-embedded Human thyroid cancer tissue using ETAA1 Polyclonal Antibody at dilution of 1:25(×200)

### Preparation & Storage

<b>Storage</b>	Store at -20°C Valid for 12 months. Avoid freeze / thaw cycles.
<b>Shipping</b>	The product is shipped with ice pack, upon receipt, store it immediately at the temperature recommended.

### Background

ETAA1 (Ewing's tumor-associated antigen 1), also known as ETAA16, is a 926 amino acid cytoplasmic protein that is highly expressed in kidney, brain, liver and Ewing tumor cell lines. ETAA1 undergoes post-translational phosphorylation following DNA damage, most likely by either ATM or ATR, and is suggested to function as a tumour-specific cell surface antigen in Ewing's family of tumour cell lines. The gene encoding ETAA1 maps to human chromosome 2, which consists of 237 million bases, encodes over 1,400 genes and makes up approximately 8% of the human genome. A number of genetic diseases are linked to genes on chromosome 2 including Harlequin ichthyosis, sitosterolemia and Alstrom syndrome.

### For Research Use Only