

## APC Anti-Human CD20 Antibody[2H7]

**Catalog Number:** E-AB-F1212E

**Note:** Centrifuge before opening to ensure complete recovery of vial contents.

### Description

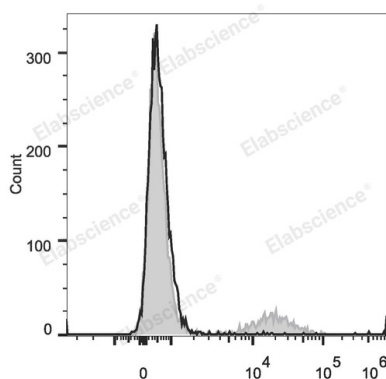
<b>Reactivity</b>	Human;Rhesus;Cynomolgus
<b>Host</b>	Mouse
<b>Isotype</b>	Mouse IgG2b, κ
<b>Clone No.</b>	2H7
<b>Isotype Control</b>	APC Mouse IgG2b, κ Isotype Control[MPC-11] [Product E-AB-F09812E]
<b>Conjugation</b>	APC
<b>Conjugation Information</b>	APC is designed to be excited by the Red (627-640 nm) laser and detected using an optical filter centered near 660 nm (e.g., a 660/20 nm bandpass filter).
<b>Storage Buffer</b>	Phosphate buffered solution, pH 7.2, containing 0.09% stabilizer and 1% protein protectant.

### Applications

### Recommended usage

<b>FCM</b>	Each lot of this antibody is quality control tested by flow cytometric analysis. <b>The amount of the reagent is suggested to be used 5 μL of antibody per test (million cells in 100 μL staining volume or per 100 μL of whole blood).</b> Please check your vial before the experiment. Since applications vary, the appropriate dilutions must be determined for individual use.
------------	---

### Data



Human peripheral blood lymphocytes are stained with APC Anti-Human CD20 Antibody (filled gray histogram) or APC Mouse IgG2b Isotype Control (empty black histogram).

### Preparation & Storage

<b>Storage</b>	Keep as concentrated solution. This product can be stored at 2-8°C for 12 months. Please protected from prolonged exposure to light and do not freeze.
<b>Shipping</b>	Ice bag

### Antigen Information

<b>Alternate Names</b>	B-lymphocyte surface antigen B1;Bp35;Leukocyte surface antigen Leu-16;MS4A1
<b>Uniprot ID</b>	P11836
<b>Gene ID</b>	931

### For Research Use Only

## Background

CD20 is a 33-37 kD, four transmembrane spanning protein, also known as B1 and Bp35. CD20 is expressed on pre-B-cells, resting and activated B cells (not plasma cells), some follicular dendritic cells, and at low levels on a T cell subset. CD20 is heavily phosphorylated on activated B cells and malignant B cells. Homo-oligomeric complexes of CD20 are thought to form  $\text{Ca}^{2+}$  conductive ion channels in the plasma membrane of B cells. The CD20 molecule is involved in B-cell activation and is associated with various Src family kinases (Lyn, Lck, Fyn). It exists in a complex with MHC class I and II, CD53, CD81, and CD82.