

# Recombinant Human Semaphorin 4D/SEMA4D Protein (Fc Tag)



Catalog Number:PKSH033023

**Note:** Centrifuge before opening to ensure complete recovery of vial contents.

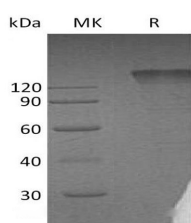
## Description

<b>Synonyms</b>	Semaphorin-4D;A8;BB18;GR3;CD100;C9orf164;CD100;coll-4;M-sema-G;SEMAJ
<b>Species</b>	Human
<b>Expression Host</b>	HEK293 Cells
<b>Sequence</b>	Met22-Arg734
<b>Accession</b>	AAH54500.1
<b>Calculated Molecular Weight</b>	106.4 kDa
<b>Observed molecular weight</b>	130-170 kDa
<b>Tag</b>	C-Fc

## Properties

<b>Purity</b>	> 95 % as determined by reducing SDS-PAGE.
<b>Endotoxin</b>	< 1.0 EU per µg of the protein as determined by the LAL method.
<b>Storage</b>	Generally, lyophilized proteins are stable for up to 12 months when stored at -20 to -80°C. Reconstituted protein solution can be stored at 4-8°C for 2-7 days. Aliquots of reconstituted samples are stable at < -20°C for 3 months.
<b>Shipping</b>	This product is provided as lyophilized powder which is shipped with ice packs.
<b>Formulation</b>	Lyophilized from a 0.2 µm filtered solution of PBS, pH 7.4. Normally 5 % - 8 % trehalose, mannitol and 0.01% Tween80 are added as protectants before lyophilization. Please refer to the specific buffer information in the printed manual.
<b>Reconstitution</b>	Please refer to the printed manual for detailed information.

## Data



> 95 % as determined by reducing SDS-PAGE.

## Background

Semaphorin-4D is also known as A8;BB18; GR3; CD100. Semaphorin-4D belongs to the semaphorin family containing 1 Ig-like C2-type domain; 1 PSI domain and 1 Sema domain. It is the cell surface receptor for PLXN1B and PLXNB2 that plays an important role in cell-cell signaling. It promotes the migration of cerebellar granule cells and of endothelial cells; regulates dendrite and axon branching and morphogenesis. Semaphorin-4D Plays a role in the immune system; Promotes signaling via SRC and PTK2B/PYK2; which then mediates activation of phosphatidylinositol 3-kinase and of the AKT1 signaling cascade.

## For Research Use Only

A Reliable Research Partner in Life Science and Medicine

Toll-free: 1-888-852-8623

Web: [www.elabscience.com](http://www.elabscience.com)

Tel: 1-832-243-6086

Email: [techsupport@elabscience.com](mailto:techsupport@elabscience.com)

Fax: 1-832-243-6017