

## FITC Anti-Mouse CD107a/LAMP-1 Antibody[1D4B]

**Catalog Number:** E-AB-F1254C

**Note:** Centrifuge before opening to ensure complete recovery of vial contents.

### Description

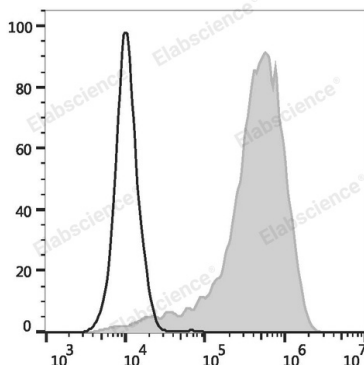
<b>Reactivity</b>	Mouse
<b>Host</b>	Rat
<b>Isotype</b>	Rat IgG2a, $\kappa$
<b>Clone No.</b>	1D4B
<b>Isotype Control</b>	FITC Rat IgG2a, $\kappa$ Isotype Control[2A3] [Product E-AB-F09832C]
<b>Conjugation</b>	FITC
<b>Conjugation Information</b>	FITC is designed to be excited by the Blue laser (488 nm) and detected using an optical filter centered near 530 nm (e.g., a 525/40 nm bandpass filter).
<b>Storage Buffer</b>	Phosphate buffered solution, pH 7.2, containing 0.09% stabilizer and 1% protein protectant.

### Applications

### Recommended usage

<b>FCM</b>	Each lot of this antibody is quality control tested by flow cytometric analysis. <b>The amount of the reagent is suggested to be used 5 <math>\mu</math>L of antibody per test (million cells in 100 <math>\mu</math>L staining volume or per 100 <math>\mu</math>L of whole blood).</b> Please check your vial before the experiment. Since applications vary, the appropriate dilutions must be determined for individual use.
------------	--

### Data



C57BL/6 murine abdominal macrophages elicited by starch broth are stained with FITC Anti-Mouse CD107a Antibody (Left). Macrophages are stained with FITC Rat IgG2a, $\kappa$  Isotype Control (Right).

### Preparation & Storage

<b>Storage</b>	Keep as concentrated solution. This product can be stored at 2-8°C for 12 months. Please protected from prolonged exposure to light and do not freeze.
<b>Shipping</b>	Ice bag

### Antigen Information

<b>Alternate Names</b>	CD107 antigen-like family member Alysosomal membrane glycoprotein 1;lysosome-associated membrane protein 1;LAMP-1;Lysosome-associated membrane glycoprotein 1;LAMP-1
------------------------	--

### For Research Use Only

**Uniprot ID**

P11438

**Gene ID**

16783

**Background**

The 1D4B antibody recognizes CD107a which is also known as, Lysosome-Associated Membrane Protein 1 (LAMP-1). CD107a is one of the two major glycoproteins in lysosome membranes that provide useful markers to distinguish lysosomes from other organelles. CD107a may play a role in the lysosomal degradation of certain molecules. Mouse CD107a is a type I transmembrane glycoprotein. It consists of a 40-kDa core protein which is heavily glycosylated to form heterogeneous mature glycoprotein of 110-140 kDa. It is principally expressed in epithelial cells and macrophages in a variety of organs. Following activation, CD107a is relocated to the surface of some lymphocytes, macrophages, epithelial cells, endothelial cells, platelets, and tumor cells. Cell-surface CD107a may participate in intercellular adhesion and adhesion to the extracellular matrix. Cell surface CD107a expression can serve as a useful marker for cytotoxic NK and CD8+ T cells, as well as, some malignant tumor cells.

**For Research Use Only**