

HRP-conjugated Lamin B1 Monoclonal Antibody

catalog number: AN00292HP

Note: Centrifuge before opening to ensure complete recovery of vial contents.

Description

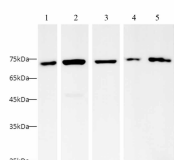
Reactivity	Human
Immunogen	Recombinant human Lamin B1 protein by E. Coli
Host	Mouse
Isotype	IgG2b
Clone	7H10
Purification	Protein A/G Purification
Conjugation	HRP
Buffer	PBS with 0.05% proclin 300, 1% protective protein and 50% glycerol,pH7.4

Applications

Recommended Dilution

WB	1:2500-1:5000
-----------	---------------

Data



Western blot with HRP-conjugated Lamin B1 Monoclonal Antibody at dilution of 1:5000.lane 1:Raji whole cell lysate, lane 2:HL-60 whole cell lysate, lane 3:HeLa whole cell lysate, lane 4:SH-SY5Y whole cell lysate,lane 5:THP-1 whole cell lysate

Observed-MV:70 kDa

Calculated-MV:66 kDa

Preparation & Storage

Storage	Store at -20°C Valid for 12 months. Avoid freeze / thaw cycles. Protected from prolonged exposure to light.
Shipping	The product is shipped with ice pack,upon receipt,store it immediately at the temperature recommended.

Background

Lamins are components of the nuclear lamina,a fibrous layer on the nucleoplasmic side of the inner nuclear membrane, which is thought to provide a framework for the nuclear envelope and may also interact with chromatin.

For Research Use Only