

## Recombinant Human HER3/ErbB3 Protein (His Tag)

**Catalog Number:** PKSH031766

**Note:** Centrifuge before opening to ensure complete recovery of vial contents.

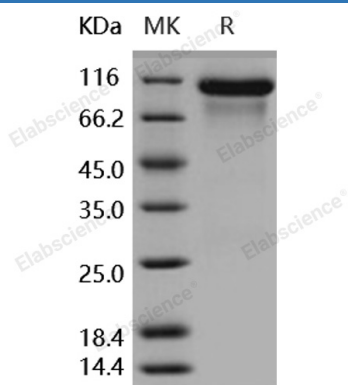
### Description

<b>Species</b>	Human
<b>Source</b>	HEK293 Cells-derived Human HER3/ErbB3 protein Met 1-Thr 643, with an C-terminal His
<b>Calculated MW</b>	70.2 kDa
<b>Observed MW</b>	100-110 kDa
<b>Accession</b>	NP_001973.2
<b>Bio-activity</b>	Immobilized human ErbB3 at 2 µg/mL (100 µl/well) can bind human NRG1 (isoform Beta1), The EC <sub>50</sub> of human NRG1 (isoform Beta1) is 0.43 µg/mL.

### Properties

<b>Purity</b>	> 95 % as determined by reducing SDS-PAGE.
<b>Endotoxin</b>	< 1.0 EU per µg of the protein as determined by the LAL method.
<b>Storage</b>	Generally, lyophilized proteins are stable for up to 12 months when stored at -20 to -80 °C. Reconstituted protein solution can be stored at 4-8°C for 2-7 days. Aliquots of reconstituted samples are stable at < -20°C for 3 months.
<b>Shipping</b>	This product is provided as lyophilized powder which is shipped with ice packs.
<b>Formulation</b>	Lyophilized from sterile PBS, pH 7.5 Normally 5% - 8% trehalose, mannitol and 0.01% Tween 80 are added as protectants before lyophilization. Please refer to the specific buffer information in the printed manual.
<b>Reconstitution</b>	Please refer to the printed manual for detailed information.

### Data



> 95 % as determined by reducing SDS-PAGE.

### Background

### For Research Use Only

Toll-free: 1-888-852-8623  
Web: [www.elabscience.com](http://www.elabscience.com)

Tel: 1-832-243-6086  
Email: [techsupport@elabscience.com](mailto:techsupport@elabscience.com)

Fax: 1-832-243-6017

Rev. V3.5

ErbB3, also known as Her3(human epidermal growth factor receptor3), is a member of the epidermal growth factor receptor (EGFR) family of receptor tyrosine kinases. This membrane-bound glycoprotein has a neuregulin binding domain but has not an active kinase domain., and therefore can not mediate the intracellular signal transduction through protein phosphorylation. However, its heterodimer with ErbB2 or other EGFR members responsible for tyrosine phosphorylation forms a receptor complex with high affinity, and initiates the related pathway which lead to cell proliferation or differentiation. ErbB3 has been shown to implicated in numerous cancers, including prostate, bladder, and breast tumors. This protein has different isoforms derived from alternative splicing variants, and among which, the secreted isoform lacking the intermembrane region modulates the activity of membrane-bound form.