

## CD80 Polyclonal Antibody

**catalog number: E-AB-68320**

**Note:** Centrifuge before opening to ensure complete recovery of vial contents.

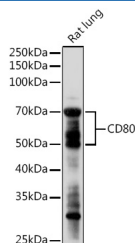
### Description

<b>Reactivity</b>	Human;Mouse;Rat
<b>Immunogen</b>	A synthetic peptide of human CD80
<b>Host</b>	Rabbit
<b>Isotype</b>	IgG
<b>Purification</b>	Affinity purification
<b>Buffer</b>	Phosphate buffered solution, pH 7.4, containing 0.05% stabilizer and 50% glycerol.

### Applications

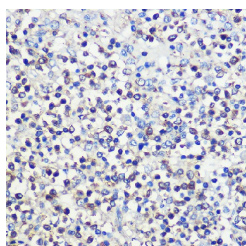
<b>WB</b>	1:500-1:2000
<b>IHC</b>	1:50-1:200

### Data

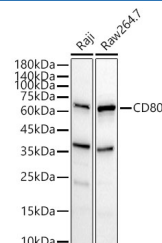


Western blot analysis of extracts of Rat lung using CD80 Polyclonal Antibody at 1:1000 dilution.

**Observed-MW:50-75 kDa**  
**Calculated-MW:18 kDa/29 kDa/33 kDa**



Immunohistochemistry of paraffin-embedded human spleen using CD80 Polyclonal antibody at dilution of 1:100 (40x lens). Perform high pressure antigen retrieval with 10 mM citrate buffer pH 6.0 before commencing with IHC staining protocol.



Western blot analysis of various lysates using CD80 Polyclonal Antibody at 1:1000 dilution.

**Observed-MW:50-75 kDa**  
**Calculated-MW:18 kDa/29 kDa/33 kDa**

### Preparation & Storage

<b>Storage</b>	Store at -20°C Valid for 12 months. Avoid freeze / thaw cycles.
<b>Shipping</b>	The product is shipped with ice pack, upon receipt, store it immediately at the temperature recommended.

### Background

### For Research Use Only

The protein encoded by this gene is a membrane receptor that is activated by the binding of CD28 or CTLA-4. The activated protein induces T-cell proliferation and cytokine production. This protein can act as a receptor for adenovirus subgroup B and may play a role in lupus neuropathy.

---

## For Research Use Only

Toll-free: 1-888-852-8623  
Web: [www.elabscience.com](http://www.elabscience.com)

Tel: 1-832-243-6086  
Email: [techsupport@elabscience.com](mailto:techsupport@elabscience.com)

Fax: 1-832-243-6017

Rev. V1.7