

# Recombinant Human Cathepsin L2/CTSL2 Protein (His Tag)



Catalog Number:PKSH032183

**Note:** Centrifuge before opening to ensure complete recovery of vial contents.

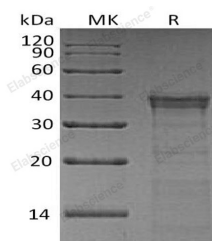
## Description

<b>Synonyms</b>	Cathepsin L2;Cathepsin U;Cathepsin V;CTSL2;CATL2;CTSU;CTSV
<b>Species</b>	Human
<b>Expression Host</b>	HEK293 Cells
<b>Sequence</b>	Val18-Val334
<b>Accession</b>	O60911
<b>Calculated Molecular Weight</b>	36.7 kDa
<b>Observed molecular weight</b>	33-43 kDa
<b>Tag</b>	C-His

## Properties

<b>Purity</b>	> 95 % as determined by reducing SDS-PAGE.
<b>Endotoxin</b>	< 1.0 EU per µg of the protein as determined by the LAL method.
<b>Storage</b>	Store at < -20°C, stable for 6 months. Please minimize freeze-thaw cycles.
<b>Shipping</b>	This product is provided as liquid. It is shipped at frozen temperature with blue ice/gel packs. Upon receipt, store it immediately at < - 20°C.
<b>Formulation</b>	Supplied as a 0.2 µm filtered solution of 20mM MES, 150mM NaCl, 5% Trehalose, 5% Mannitol, 0.01% Tween80, pH5.5.
<b>Reconstitution</b>	Not Applicable

## Data



> 95 % as determined by reducing SDS-PAGE.

## Background

Cathepsin L2 belongs to the Peptidase C1 family. Cathepsin L2 can be autocatalytically converted to the mature form as a proenzyme in lysosomes at pH=7.0. Cathepsin L2 cannot be expressed in normal mammary gland, colon and peritumoral tissue, but it can be expressed in breast carcinomas and colorectal tissues. These suggest Cathepsin L2 may play a role in tumor processes. Cathepsin L2 is specifically expressed in the testis, thymus, and corneal epithelium.

## For Research Use Only

A Reliable Research Partner in Life Science and Medicine

Toll-free: 1-888-852-8623

Web: [www.elabscience.com](http://www.elabscience.com)

Tel: 1-832-243-6086

Email: [techsupport@elabscience.com](mailto:techsupport@elabscience.com)

Fax: 1-832-243-6017