

# KCTD7 Polyclonal Antibody

catalog number: E-AB-18176

**Note:** Centrifuge before opening to ensure complete recovery of vial contents.

## Description

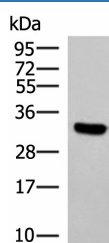
<b>Reactivity</b>	Human;Mouse;Rat
<b>Immunogen</b>	Synthetic peptide of human KCTD7
<b>Host</b>	Rabbit
<b>Isotype</b>	IgG
<b>Purification</b>	Antigen affinity purification
<b>Conjugation</b>	Unconjugated
<b>buffer</b>	Phosphate buffered solution, pH 7.4, containing 0.05% stabilizer and 50% glycerol.

## Applications

## Recommended Dilution

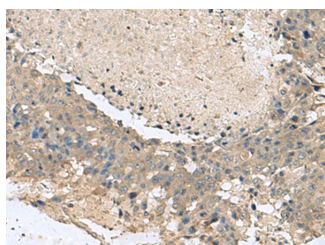
<b>WB</b>	1:1000-1:5000
<b>IHC</b>	1:50-1:300

## Data

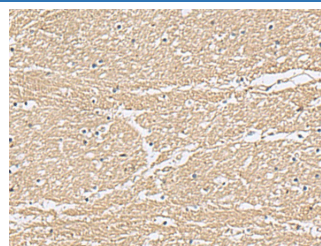


Western blot analysis of Hela cell lysate using KCTD7 Polyclonal Antibody at dilution of 1:1200

**Observed-MV:Refer to figures**  
**Calculated-MV:33 kDa**



Immunohistochemistry of paraffin-embedded Human liver cancer tissue using KCTD7 Polyclonal Antibody at dilution of 1:55(×200)



Immunohistochemistry of paraffin-embedded Human brain tissue using KCTD7 Polyclonal Antibody at dilution of 1:55(×200)

## Preparation & Storage

<b>Storage</b>	Store at -20°C Valid for 12 months. Avoid freeze / thaw cycles.
<b>Shipping</b>	The product is shipped with ice pack,upon receipt,store it immediately at the temperature recommended.

## Background

## For Research Use Only

# KCTD7 Polyclonal Antibody

catalog number: E-AB-18176



KCTD7 (Potassium Channel Tetramerization Domain Containing 7) is a Protein Coding gene. Diseases associated with KCTD7 include Epilepsy, Progressive Myoclonic 3, With Or Without Intracellular Inclusions and Cln14 Disease. Among its related pathways are Neuropathic Pain-Signaling in Dorsal Horn Neurons and Innate Immune System. An important paralog of this gene is KCTD14. This gene encodes a member of the potassium channel tetramerization domain-containing protein family. Family members are identified on a structural basis and contain an amino-terminal domain similar to the T1 domain present in the voltage-gated potassium channel. Mutations in this gene have been associated with progressive myoclonic epilepsy-3. Alternative splicing results in multiple transcript variants.

## For Research Use Only

A Reliable Research Partner in Life Science and Medicine  
Tel: 400-999-2100

Email: [techsupport@elabscience.cn](mailto:techsupport@elabscience.cn)

Web: [www.elabscience.cn](http://www.elabscience.cn)

Rev. V1.7