

Recombinant Human CLIC5 Protein (His Tag)

Catalog Number: PDEH100667

Note: Centrifuge before opening to ensure complete recovery of vial contents.

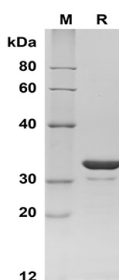
Description

Species	Human
Source	E.coli-derived Human CLIC5 protein Met1-Ser251, with an N-terminal His
Calculated MW	30.3 kDa
Observed MW	32 kDa
Accession	Q9NZA1
Bio-activity	Not validated for activity

Properties

Purity	> 95% as determined by reducing SDS-PAGE.
Endotoxin	< 10 EU/mg of the protein as determined by the LAL method
Storage	Generally, lyophilized proteins are stable for up to 12 months when stored at -20 to -80 °C. Reconstituted protein solution can be stored at 4-8°C for 2-7 days. Aliquots of reconstituted samples are stable at < -20°C for 3 months.
Shipping	This product is provided as lyophilized powder which is shipped with ice packs.
Formulation	Lyophilized from a 0.2 µm filtered solution in PBS with 5% Trehalose and 5% Mannitol.
Reconstitution	It is recommended that sterile water be added to the vial to prepare a stock solution of 0.5 mg/mL. Concentration is measured by UV-Vis.

Data



SDS-PAGE analysis of Human CLIC5 proteins, 2µg/lane of Recombinant Human CLIC5 proteins was resolved with SDS-PAGE under reducing conditions, showing bands at 33 KD.

Background

Chloride Intracellular Channel Protein 5 (CLIC5) is a single-pass membrane protein which belongs to the chloride channel CLIC family. It contains one GST C-terminal domain. Chloride intracellular channels are involved in chloride ion transport within various subcellular compartments. CLIC5 can insert into membranes and form selective ion channels regulated by actin that may transport chloride ions. It may play a role in the regulation of transepithelial ion absorption and secretion. CLIC5 specifically associates with the cytoskeleton of placenta microvilli. CLIC5 is required for the development and/or maintenance of the proper glomerular endothelial cell and podocyte architecture.

For Research Use Only