

Sumo-Tag Polyclonal Antibody

catalog number: E-AB-40553

Note: Centrifuge before opening to ensure complete recovery of vial contents.

Description

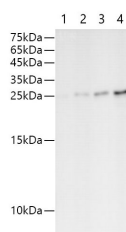
Reactivity	All
Immunogen	Recombinant Sumo protein
Host	Rabbit
Isotype	IgG
Purification	Antigen Affinity Purification
Conjugation	Unconjugated
buffer	PBS with 0.05% proclin 300, 1% protective protein and 50% glycerol,pH7.4

Applications

Recommended Dilution

WB	1:500-1000
-----------	------------

Data



Western blot of Sumo-tag fusion protein with anti-Sumo polyclonal antibody at dilution of 1:1000. Lane 1 : Recombinant SUMO protein at 6.25ng; Lane 2 : Recombinant SUMO protein at 12.5ng; Lane 3: Recombinant SUMO protein at 25ng; Lane 4: Recombinant SUMO protein at 50ng

Observed-MV:26 kDa

Calculated-MV:26 kDa

Preparation & Storage

Storage	Store at -20°C Valid for 12 months. Avoid freeze / thaw cycles.
Shipping	The product is shipped with ice pack,upon receipt,store it immediately at the temperature recommended.

Background

SUMO is short for Small Ubiquitin-like Modifier, the 100 amino acid sequence, which is necessary for regulation of protein transport and is important for controlling transcription for eukaryotic cells. Sumo tag is most frequently used as N-end fus

For Research Use Only