

Recombinant Human RPE Protein (E.coli, His Tag)

Catalog Number: PKSH033347



Note: Centrifuge before opening to ensure complete recovery of vial contents.

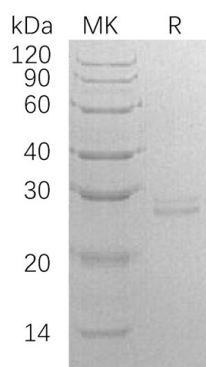
Description

Species	Human
Mol_Mass	25.9 kDa
Accession	Q96AT9-1
Bio-activity	Not validated for activity

Properties

Purity	> 95 % as determined by reducing SDS-PAGE.
Endotoxin	< 1.0 EU per μg of the protein as determined by the LAL method.
Storage	Store at $< -20^{\circ}\text{C}$, stable for 6 months. Please minimize freeze-thaw cycles.
Shipping	This product is provided as liquid. It is shipped at frozen temperature with blue ice/gel packs. Upon receipt, store it immediately at $< -20^{\circ}\text{C}$.
Formulation	Supplied as a 0.2 μm filtered solution of 20mM PB, 150mM NaCl, pH 6.2.
Reconstitution	Not Applicable

Data



> 95 % as determined by reducing SDS-PAGE.

Background

Ribulose-Phosphate 3-Epimerase (RPE) is a member of the Ribulose-Phosphate 3-Epimerase family. RPE exists as a homodimer and catalyzes the reversible epimerization of D-ribulose 5-phosphate to D-xylulose 5-phosphate. RPE binds one divalent metal cation per subunit and contains tightly bound Fe^{2+} when produced in E. coli, but the physiological cofactor may be Co^{2+} , Mn^{2+} or Zn^{2+} . It has been shown that RPE participates in 3 metabolic pathways: pentose phosphate pathway, pentose and glucuronate interconversions, and carbon fixation.

For Research Use Only

A Reliable Research Partner in Life Science and Medicine
Tel:400-999-2100

Email:techsupport@elabscience.cn

Web:www.elabscience.cn

Rev. V3.2