

# S-tag Monoclonal Antibody

catalog number: E-AB-48020

**Note:** Centrifuge before opening to ensure complete recovery of vial contents.

## Description

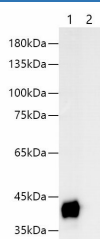
<b>Reactivity</b>	All
<b>Immunogen</b>	Synthetic peptide corresponding to S tag conjugated to keyhole limpet haemocyanin.
<b>Host</b>	Mouse
<b>Isotype</b>	IgG2a
<b>Clone</b>	2A4
<b>Purification</b>	Protein A/G Purification
<b>Conjugation</b>	Unconjugated
<b>buffer</b>	PBS with 0.05% proclin 300, 1% protective protein and 50% glycerol,pH7.4

## Applications

## Recommended Dilution

<b>WB</b>	1:2000-4000
-----------	-------------

## Data



Western blotting with anti-S-Tag monoclonal antibody at dilution of 1:1000. Lane 1: S tag transfected HEK 293 cell lysates, lane 2: HEK 293 whole cell lysate

**Observed-MV:40 kDa**

**Calculated-MV:40 kDa**

## Preparation & Storage

<b>Storage</b>	Store at -20°C Valid for 12 months. Avoid freeze / thaw cycles.
<b>Shipping</b>	The product is shipped with ice pack,upon receipt,store it immediately at the temperature recommended.

## Background

S tag is an epitope tag composed of a 15 residue peptide, KETAAAKFERQHMS, derived from the pancreatic ribonuclease A. This interactive complex (S - tag/S - protein) results in micromolar affinity – dependent upon pH, temperature, and ionic strength . The S - tag itself enables colorimetric detection via western blot analysis or a rapidly detected assay dependent upon ribonucleolytic reconstitution and activity.

## For Research Use Only