

PE Anti-Mouse CD2 Antibody[RM2-5]

Catalog Number: E-AB-F1387D

Note: Centrifuge before opening to ensure complete recovery of vial contents.

Description

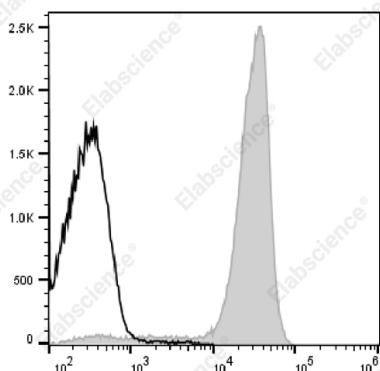
Reactivity	Mouse
Host	Rat
Isotype	Rat IgG2b, λ
Clone No.	RM2-5
Isotype Control	PE Rat IgG2b, λ Isotype Control[G013B8] [Product AN00565D]
Conjugation	PE
Conjugation Information	PE is designed to be excited by the Blue (488 nm), Green (532 nm) and Yellow-Green (561 nm) lasers and detected using an optical filter centered near 575 nm (e.g., a 585/42 nm bandpass filter).
Storage Buffer	Phosphate buffered solution, pH 7.2, containing 0.09% sodium azide and 1% BSA.

Applications

Recommended usage

FCM
Each lot of this antibody is quality control tested by flow cytometric analysis. **The amount of the reagent is suggested to be used 5 μ L of antibody per test (million cells in 100 μ L staining volume or per 100 μ L of whole blood).** Please check your vial before the experiment. Since applications vary, the appropriate dilutions must be determined for individual use.

Data



Staining of C57BL/6 murine splenocytes cells with PE Anti-Mouse CD2 Antibody[RM2-5] (filled gray histogram) or PE Rat IgG2b, λ Isotype Control (empty black histogram). Total viable cells were used for analysis.

Preparation & Storage

Storage	Keep as concentrated solution. This product can be stored at 2-8°C for 12 months. Please protected from prolonged exposure to light and do not freeze.
Shipping	Ice bag

Antigen Information

Alternate Names	LFA-2;T11;Ly-37;SRBC-R
Uniprot ID	P08920
Gene ID	12481

For Research Use Only

Background

CD2 is a 45-58 kD type I transmembrane glycoprotein, also known as LFA-2, T11 or Ly-37. It is a member of the Ig superfamily. Mouse CD2 is primarily expressed on T cells, B cells, thymocytes and NK cells. It is a ligand for CD48 and is involved in T cell activation and differentiation.