

# Recombinant Human UBE2R2/UBC3B Protein (His Tag)



Catalog Number:PKSH033188

**Note:** Centrifuge before opening to ensure complete recovery of vial contents.

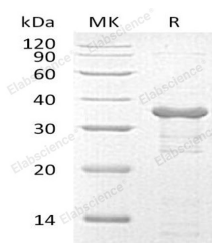
## Description

<b>Synonyms</b>	Ubiquitin-Conjugating Enzyme E2 R2;Ubiquitin Carrier Protein R2;Ubiquitin-Conjugating Enzyme E2-CDC34B;Ubiquitin-Protein Ligase R2;UBE2R2;CDC34B;UBC3B
<b>Species</b>	Human
<b>Expression Host</b>	E.coli
<b>Sequence</b>	Met 1-Ser238
<b>Accession</b>	Q712K3
<b>Calculated Molecular Weight</b>	29.3 kDa
<b>Observed molecular weight</b>	37 kDa
<b>Tag</b>	N-His

## Properties

<b>Purity</b>	> 90 % as determined by reducing SDS-PAGE.
<b>Endotoxin</b>	< 1.0 EU per µg of the protein as determined by the LAL method.
<b>Storage</b>	Store at < -20°C, stable for 6 months. Please minimize freeze-thaw cycles.
<b>Shipping</b>	This product is provided as liquid. It is shipped at frozen temperature with blue ice/gel packs. Upon receipt, store it immediately at < - 20°C.
<b>Formulation</b>	Supplied as a 0.2 µm filtered solution of 50mm HEPES,150mM NaCl, pH 7.5.
<b>Reconstitution</b>	Not Applicable

## Data



> 90 % as determined by reducing SDS-PAGE.

## Background

Ubiquitin-Conjugating Enzyme E2 R2 (UBE2R2) is a modification enzyme that belongs to the ubiquitin-conjugating enzyme family. UBE2R2 is involved in cell growth and transformation. It accepts ubiquitin from the E1 complex and catalyzes its covalent attachment to other proteins. In vitro, UBE2R2 catalyzes monoubiquitination and 'Lys-48'-linked polyubiquitination. It may be involved in degradation of katenin.

## For Research Use Only

A Reliable Research Partner in Life Science and Medicine

Toll-free: 1-888-852-8623

Web: [www.elabscience.com](http://www.elabscience.com)

Tel: 1-832-243-6086

Email: [techsupport@elabscience.com](mailto:techsupport@elabscience.com)

Fax: 1-832-243-6017