

# Recombinant Human Neutrophil Cytosol Factor 1/NCF1 Protein (His Tag)

Catalog Number: PKSH032805



**Note:** Centrifuge before opening to ensure complete recovery of vial contents.

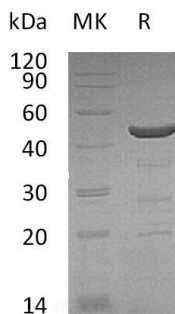
## Description

<b>Species</b>	Human
<b>Mol_Mass</b>	45.6 kDa
<b>Accession</b>	P14598
<b>Bio-activity</b>	Not validated for activity

## Properties

<b>Purity</b>	> 95 % as determined by reducing SDS-PAGE.
<b>Endotoxin</b>	< 1.0 EU per µg of the protein as determined by the LAL method.
<b>Storage</b>	Generally, lyophilized proteins are stable for up to 12 months when stored at -20 to -80 °C. Reconstituted protein solution can be stored at 4-8°C for 2-7 days. Aliquots of reconstituted samples are stable at < -20°C for 3 months.
<b>Shipping</b>	This product is provided as lyophilized powder which is shipped with ice packs.
<b>Formulation</b>	Lyophilized from a 0.2 µm filtered solution of 20mM Tris-HCl, 100mM NaCl, 1mM DTT, pH 8.0. Normally 5% - 8% trehalose, mannitol and 0.01% Tween 80 are added as protectants before lyophilization. Please refer to the specific buffer information in the printed manual.
<b>Reconstitution</b>	Please refer to the printed manual for detailed information.

## Data



> 95 % as determined by reducing SDS-PAGE.

## Background

Neutrophil cytosol factor 1 (NCF1) is a 47 kDa cytosolic subunit of neutrophil NADPH oxidase. This oxidase is characterized as a multicomponent enzyme which is activated to produce superoxide anion. NCF2, NCF1, and a membrane bound cytochrome b558 are required for the activation of the latent NADPH oxidase. The human NCF1 gene encodes a 390 amino acids protein without a signal peptide. The NCF1 gene interacts with other subunits of nicotinamide adenine dinucleotide phosphate-oxidase (NADPH) and plays an important role in innate immunity, producing reactive oxygen species and reducing the severity and duration of parasitic infection and autoimmune diseases. NCF1 also has a role in T cell activation.

## For Research Use Only

A Reliable Research Partner in Life Science and Medicine  
Tel:400-999-2100

Email:[techsupport@elabscience.cn](mailto:techsupport@elabscience.cn)

Web:[www.elabscience.cn](http://www.elabscience.cn)

Rev. V3.5