

Recombinant Phospho-GSK3 beta (Ser9) Monoclonal Antibody

catalog number: **AN300144P**

Note: Centrifuge before opening to ensure complete recovery of vial contents.

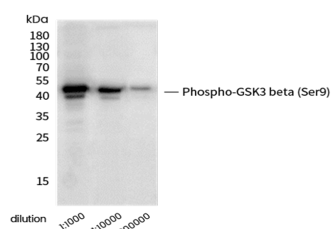
Description

Reactivity	Human
Immunogen	A synthetic peptide corresponding to residues around Ser9 of Human Phospho-GSK3 beta
Host	Rabbit
Isotype	IgG
Clone	4B10
Purification	Protein A
Buffer	0.2 µm filtered solution in PBS

Applications

Applications	Recommended Dilution
WB	1:1000-1:5000

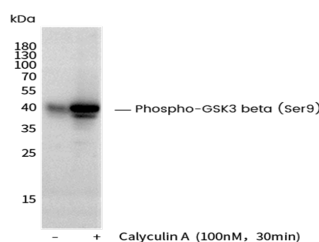
Data



Western blot analysis of extracts from serum-starved HeLa treated with calyculin A (100nM, 30 min), using Phospho-GSK3 beta (Ser9) Antibody at 1:1000, 1:10000, 1:200000 dilution.

Observed-MW:50 kDa

Calculated-MW:46 kDa



Western blot analysis of extracts from serum-starved HeLa, untreated (-) or treated with Calyculin A (100 nM, 30 min; +), using Phospho-GSK3 beta (Ser9) Monoclonal Antibody at 1:1000 dilution.

Observed-MW:50 kDa

Calculated-MW:46 kDa

Preparation & Storage

Storage	This antibody can be stored at 2°C-8°C for one month without detectable loss of activity. Antibody products are stable for twelve months from date of receipt when stored at -20°C to -80°C. Preservative-Free. Avoid repeated freeze-thaw cycles.
Shipping	Ice bag

Background

The protein encoded by this gene is a serine-threonine kinase, belonging to the glycogen synthase kinase subfamily. It is involved in energy metabolism, neuronal cell development, and body pattern formation. Polymorphisms in this gene have been implicated in modifying risk of Parkinson disease, and studies in mice show that overexpression of this gene may be relevant to the pathogenesis of Alzheimer disease. Alternatively spliced transcript variants encoding different isoforms have been found for this gene.

For Research Use Only