

## Recombinant HVEM/TNFRSF14/CD270 Monoclonal Antibody

catalog number: **AN300320P**

**Note:** Centrifuge before opening to ensure complete recovery of vial contents.

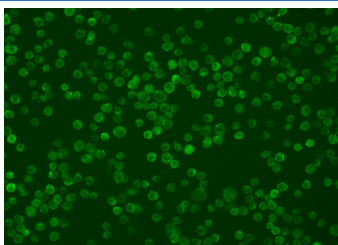
### Description

<b>Reactivity</b>	Human
<b>Immunogen</b>	Recombinant Human HVEM/TNFRSF14/CD270 Protein
<b>Host</b>	Rabbit
<b>Isotype</b>	IgG
<b>Clone</b>	8D9
<b>Purification</b>	Protein A
<b>Buffer</b>	0.2 µm filtered solution in PBS

### Applications Recommended Dilution

<b>ICC/IF</b>	1:20-1:100
---------------	------------

### Data



Immunofluorescence analysis of HVEM in Raji cells. Cells were fixed with 4% PFA, blocked with 10% serum, and incubated with rabbit anti-human HVEM monoclonal antibody (dilution ratio 1:60) at 4°C overnight. Then cells were stained with the Alexa Fluor®488-conjugated Goat Anti-rabbit IgG secondary antibody (green). Positive staining was localized to Cytoplasm and Cell membrane.

### Preparation & Storage

<b>Storage</b>	This antibody can be stored at 2°C-8°C for one month without detectable loss of activity. Antibody products are stable for twelve months from date of receipt when stored at -20°C to -80°C. Preservative-Free. Avoid repeated freeze-thaw cycles.
<b>Shipping</b>	Ice bag

### Background

#### For Research Use Only

Herpesvirus entry mediator (HVEM), also referred to as TNFRSF14, TR2 (TNF receptor-like molecule) and ATAR (another TRAF-associated receptor), is a member of type I transmembrane protein belonging to the TNF-receptor superfamily. It is expressed on many immune cells, including T and B cells, NK cells, monocytes, and neutrophils. Two TNF superfamily ligands lymphotoxin  $\alpha$  (TNF- $\beta$ ) and LIGHT (TNFSF14) are identified as cellular ligands for HVEM and initiate the positive signaling. However, recent studies have revealed that HVEM is also involved in the unique inhibitory signaling pathway for T cells through activating tyrosine phosphorylation of the immunoreceptor tyrosine-based inhibitory motif (ITIM) in B and T lymphocyte attenuator (BTLA). HVEM provides a stimulatory signal following engagement with LIGHT (TNFSF14) on T cells. In contrast, it can also provide an inhibitory signal to T cells when it binds the B and T lymphocyte attenuator (BTLA), a ligand member of the Immunoglobulin (Ig) superfamily. Thus, HVEM may be viewed as a molecular switch, capable of facilitating both stimulatory and inhibitory cosignaling in T cells. Substantial evidence from both human disease and from experimental mouse models has indicated that dysregulation of the LIGHT-HVEM-BTLA cosignaling pathway can cause inflammation in the lung and in mucosal tissues.