

## LHPP Polyclonal Antibody

**catalog number: E-AB-64982**

**Note:** Centrifuge before opening to ensure complete recovery of vial contents.

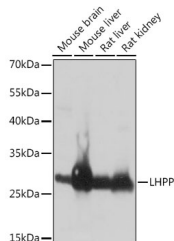
### Description

<b>Reactivity</b>	Human;Mouse;Rat
<b>Immunogen</b>	Recombinant fusion protein of human LHPP (NP_071409.3).
<b>Host</b>	Rabbit
<b>Isotype</b>	IgG
<b>Purification</b>	Affinity purification
<b>Buffer</b>	Phosphate buffered solution, pH 7.4, containing 0.05% stabilizer and 50% glycerol.

### Applications

Applications	Recommended Dilution
<b>WB</b>	1:500-1:2000
<b>IF</b>	1:50-1:200

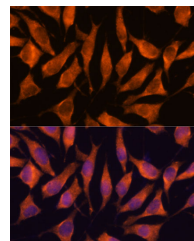
### Data



Western blot analysis of extracts of various cell lines using LHPP Polyclonal Antibody at dilution of 1:1000.

**Observed-MW:29 kDa**

**Calculated-MW:22 kDa/29 kDa**



Immunofluorescence analysis of L929 cells using LHPP Polyclonal Antibody at dilution of 1:100. Blue: DAPI for nuclear staining.

### Preparation & Storage

<b>Storage</b>	Store at -20°C Valid for 12 months. Avoid freeze / thaw cycles.
<b>Shipping</b>	The product is shipped with ice pack, upon receipt, store it immediately at the temperature recommended.

### Background

LHPP (Phospholysine Phosphohistidine Inorganic Pyrophosphate Phosphatase) is a Protein Coding gene. Diseases associated with LHPP include Melancholia and Major Depressive Disorder. Among its related pathways are Respiratory electron transport, ATP synthesis by chemiosmotic coupling, and heat production by uncoupling proteins. and Metabolism. Gene Ontology (GO) annotations related to this gene include protein homodimerization activity and inorganic diphosphatase activity. An important paralog of this gene is HDHD2.

### For Research Use Only