

CXCL7/NAP-2 Polyclonal Antibody(Capture/Detector)

catalog number: AN003990P

Note: Centrifuge before opening to ensure complete recovery of vial contents.

Description

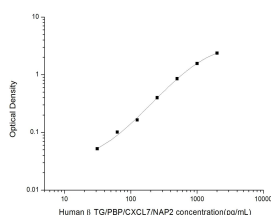
Reactivity	Human
Immunogen	Recombinant Human CXCL7/NAP-2 Protein expressed by E.coli
Host	Rabbit
Isotype	Rabbit IgG
Purification	Antigen Affinity Purification
Conjugation	Unconjugated
Buffer	Phosphate buffered solution, pH 7.2, containing 0.05% proclin 300.

Applications

Recommended Dilution

ELISA Capture	2-8 µg/mL
ELISA Detector	0.1-0.4 µg/mL

Data



Sandwich ELISA-Recombinant Human CXCL7/NAP-2 Protein standard curve. Background subtracted standard curve using Anti-CXCL7/NAP-2 antibody(AN003990P) (Capture), Anti-CXCL7/NAP-2 antibody(AN003990P) (Detector). The reference range value is 31.25-2000 pg/mL for human.

Preparation & Storage

Storage	Store at 4°C valid for 12 months or -20°C valid for long term storage, avoid freeze / thaw cycles.
Shipping	The product is shipped with ice pack, upon receipt, store it immediately at the temperature recommended.

Background

The protein encoded by this gene is a platelet-derived growth factor that belongs to the CXC chemokine family. This growth factor is a potent chemoattractant and activator of neutrophils. It has been shown to stimulate various cellular processes including DNA synthesis, mitosis, glycolysis, intracellular cAMP accumulation, prostaglandin E2 secretion, and synthesis of hyaluronic acid and sulfated glycosaminoglycan. It also stimulates the formation and secretion of plasminogen activator by synovial cells. The protein also is an antimicrobial protein with bactericidal and antifungal activity.

For Research Use Only