

AF/LE Purified Anti-Mouse Ly6G Antibody[1A8]

catalog number: E-AB-F11080

Note: Centrifuge before opening to ensure complete recovery of vial contents.

Description

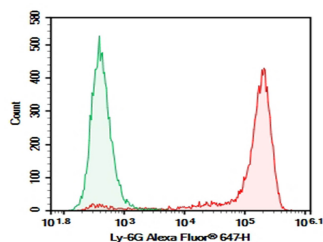
Reactivity	Mouse
Immunogen	Recombinant Mouse Ly6G protein
Host	Rat
Isotype	Rat IgG2a, κ
Clone	1A8
Purification	>98%, Protein A/G purified
Conjugation	None (AF/LE)
Buffer	Sterile PBS, pH 7.2. < 1.0 EU per mg of the antibody as determined by the LAL method

Applications

Recommended Dilution

FCM	2 μ g/mL (1×10^5 - 5×10^5 cells)
------------	---

Data



C57BL/6 Mouse bone marrow cells were stained with 0.2 μ g AF/LE Purified Anti-Mouse Ly6G Antibody[1A8] (Right) and 0.2 μ g Rat IgG2a, κ Isotype Control (Left), followed by Alexa Fluor® 647-conjugated Goat Anti-Rat IgG Secondary Antibody.

Preparation & Storage

Storage	Store at 4°C valid for 12 months or -20°C valid for long term storage, avoid freeze / thaw cycles. This preparation contains no preservatives, thus it should be handled under aseptic conditions.
Shipping	Ice bag

Background

Lymphocyte antigen 6 complex, locus G (Ly-6G), a 21-25 kD GPI-anchored protein, is expressed on the majority of myeloid cells in bone marrow and peripheral granulocytes.