

BMP2 Polyclonal Antibody

Catalog Number: E-AB-33728

Note: Centrifuge before opening to ensure complete recovery of vial contents.

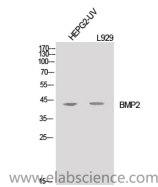
Description

Reactivity	Human, Mouse, Rat
Immunogen	Synthesized peptide derived from the C-terminal region of human BMP-2.
Host	Rabbit
Isotype	IgG
Purification	Affinity purification
Formulation	PBS with 0.02% sodium azide, 0.5% protective protein and 50% glycerol pH 7.4.

Applications Recommended Dilution

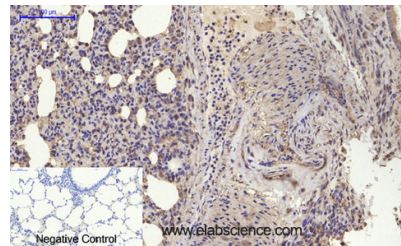
WB	1:500-1:2000
IHC	1:100-1:300
ELISA	1:10000

Data

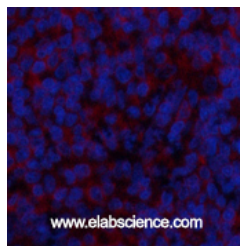


Western Blot analysis of HepG2-UV, L929 cells using BMP2 Polyclonal Antibody at dilution of 1:1000.

Observed Mw: 44kDa
Calculated Mw: 45kDa



Immunohistochemistry of paraffin-embedded Rat lung tissue using BMP2 Polyclonal Antibody at dilution of 1:200.



Immunofluorescence analysis of Rat spleen tissue using BMP2 Polyclonal Antibody at dilution of 1:200.

Preparation & Storage

Storage Store at -20°C. Avoid freeze / thaw cycles.

Background

This gene encodes a member of the transforming growth factor-beta (TGFB) superfamily. The encoded preproprotein is proteolytically processed to generate each subunit of the disulfide-linked homodimer, which induces bone and cartilage

For Research Use Only

A Reliable Research Partner in Life Science and Medicine

Toll-free: 1-888-852-8623

Web: www.elabscience.com

Tel: 1-832-243-6086

Email: techsupport@elabscience.com

Fax: 1-832-243-6017

BMP2 Polyclonal Antibody

Catalog Number: E-AB-33728



formation.

For Research Use Only

A Reliable Research Partner in Life Science and Medicine

Toll-free: 1-888-852-8623

Tel: 1-832-243-6086

Fax: 1-832-243-6017

Web: www.elabscience.com

Email: techsupport@elabscience.com