

Recombinant Human SULT1A3 Protein (His Tag)

Catalog Number: PKSH033370

Note: Centrifuge before opening to ensure complete recovery of vial contents.

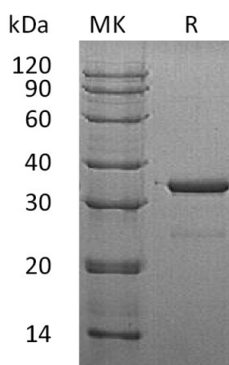
Description

Species	Human
Source	E.coli-derived Human SULT1A3 protein Met 1-Leu295, with an N-terminal His
Calculated MW	35.6 kDa
Observed MW	35 kDa
Accession	P0DMM9
Bio-activity	Not validated for activity

Properties

Purity	> 95 % as determined by reducing SDS-PAGE.
Concentration	Subject to label value.
Endotoxin	< 1.0 EU per µg of the protein as determined by the LAL method.
Storage	Store at < -20°C, stable for 6 months. Please minimize freeze-thaw cycles.
Shipping	This product is provided as liquid. It is shipped at frozen temperature with blue ice/gel packs. Upon receipt, store it immediately at < -20°C.
Formulation	Supplied as a 0.2 µm filtered solution of 20mM Tris-HCl, 6% Sucrose, 4% Mannitol, 0.05% Tween 80, pH 8.5.

Data



> 95 % as determined by reducing SDS-PAGE.

Background

Sulfotransferase 1A3/1A4 (SULT1A3) is 295 amino acids in length and localizes to the cytoplasm. It is a member of the Sulfotransferase 1 family. SULT1A3 can be found in the liver, colon, kidney, lung, brain, spleen, small intestine, placenta, and leukocytes. SULT1A3 exists as a homodimer and it catalyzes the sulfation of phenolic monoamines, such as dopamine, norepinephrine and serotonin, and phenolic and catecholic drugs.

For Research Use Only