

Recombinant Human UBE2B/HR6B Protein (His Tag)

Catalog Number: PKSH033180

Note: Centrifuge before opening to ensure complete recovery of vial contents.

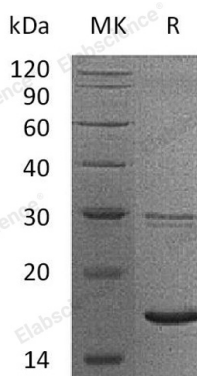
Description

Species	Human
Source	HEK293 Cells-derived Human UBE2B/HR6B protein Met 1-Ser152, with an C-terminal His
Calculated MW	18.3 kDa
Observed MW	17 kDa
Accession	P63146
Bio-activity	Not validated for activity

Properties

Purity	> 95 % as determined by reducing SDS-PAGE.
Concentration	Subject to label value.
Endotoxin	< 1.0 EU per µg of the protein as determined by the LAL method.
Storage	Store at < -20°C, stable for 6 months. Please minimize freeze-thaw cycles.
Shipping	This product is provided as liquid. It is shipped at frozen temperature with blue ice/ gel packs. Upon receipt, store it immediately at < -20°C.
Formulation	Supplied as a 0.2 µm filtered solution of 20mM PB, 150mM NaCl, pH 7.4.

Data



> 95 % as determined by reducing SDS-PAGE.

Background

Ubiquitin-Conjugating Enzyme E2 B (UBE2B) is a member of the ubiquitin-conjugating enzyme family. UBE2B accepts ubiquitin from the E1 complex and catalyzes its covalent attachment to other proteins. It is shown that UBE2B interacts with RAD18; UBR2; and WAC. UBE2B is required for post-replicative DNA damage repair. Additionally, UBE2B plays a role in sepsis-induced muscle protein proteolysis and cancer-induced cachexia.

For Research Use Only

Toll-free: 1-888-852-8623
Web: www.elabscience.com

Tel: 1-832-243-6086
Email: techsupport@elabscience.com

Fax: 1-832-243-6017