

## FITC Anti-Mouse CD48 Antibody[HM48-1]

**Catalog Number:** E-AB-F1017UC

**Note:** Centrifuge before opening to ensure complete recovery of vial contents.

### Description

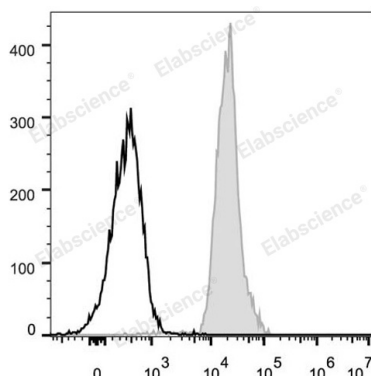
<b>Reactivity</b>	Mouse
<b>Host</b>	Armenian Hamster
<b>Isotype</b>	Armenian Hamster IgG
<b>Clone No.</b>	HM48-1
<b>Isotype Control</b>	FITC Armenian Hamster IgG Isotype Control[PIP] [Product E-AB-F09853C]
<b>Conjugation</b>	FITC
<b>Conjugation Information</b>	FITC is designed to be excited by the Blue laser (488 nm) and detected using an optical filter centered near 530 nm (e.g., a 525/40 nm bandpass filter).
<b>Storage Buffer</b>	Phosphate buffered solution, pH 7.2, containing 0.09% stabilizer.

### Applications

### Recommended usage

<b>FCM</b>	Each lot of this antibody is quality control tested by flow cytometric analysis. Please check your vial before the experiment. Since applications vary, the appropriate dilutions must be determined for individual use. We suggest each investigator should titrate the reagent to obtain optimal results [The recommended concentration is 0.1-1 µg/10 <sup>6</sup> cells in 100 µL volume].
------------	--

### Data



C57BL/6 murine splenocytes are stained with FITC Anti-Mouse CD48 Antibody (filled gray histogram). Unstained splenocytes (empty black histogram) are used as control.

### Preparation & Storage

<b>Storage</b>	Keep as concentrated solution. This product can be stored at 2-8°C for 24 months. Please protected from prolonged exposure to light and do not freeze.
<b>Shipping</b>	Ice bag

### Antigen Information

<b>Alternate Names</b>	BCM1 surface antigen;BLAST-1;CD48;CD48 antigen;Cd48;HM48-1;MRC OX-45 surface antigen;SLAMF2;sgp-60
<b>Uniprot ID</b>	P18181
<b>Gene ID</b>	12506

### For Research Use Only

## **Background**

CD48 is a 45 kD GPI-anchored glycoprotein also known as BCM1, Blast-1 (human), and OX-45 (rat). It is a member of the Ig superfamily, expressed on T and B cells and monocytes/macrophages. It plays a role in adhesion and T cell recognition. The primary ligands for CD48 are CD2 and CD244.