

# Recombinant Human Carboxypeptidase A1/CPA1 Protein (His Tag)



Catalog Number: PKSH031565

**Note:** Centrifuge before opening to ensure complete recovery of vial contents.

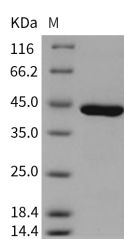
## Description

<b>Synonyms</b>	Carboxypeptidase A1; CPA1; CPA
<b>Species</b>	Human
<b>Expression Host</b>	HEK293 Cells
<b>Sequence</b>	Met 1-Tyr 419
<b>Accession</b>	NP_001859.1
<b>Calculated Molecular Weight</b>	47.0 kDa
<b>Observed molecular weight</b>	43 kDa
<b>Tag</b>	C-His
<b>Bioactivity</b>	Measured by its ability to cleave the colorimetric peptide substrate Ac-Phe-Thiaphe-OH in the presence of 5, 5'Dithiobis (2-nitrobenzoic acid) (DTNB). The specific activity is > 3, 500 pmoles/min/μg.

## Properties

<b>Purity</b>	> 97 % as determined by reducing SDS-PAGE.
<b>Endotoxin</b>	< 1.0 EU per μg of the protein as determined by the LAL method.
<b>Storage</b>	Generally, lyophilized proteins are stable for up to 12 months when stored at -20 to -80°C. Reconstituted protein solution can be stored at 4-8°C for 2-7 days. Aliquots of reconstituted samples are stable at < -20°C for 3 months.
<b>Shipping</b>	This product is provided as lyophilized powder which is shipped with ice packs.
<b>Formulation</b>	Lyophilized from sterile PBS, pH 7.4 Normally 5 % - 8 % trehalose, mannitol and 0.01% Tween80 are added as protectants before lyophilization. Please refer to the specific buffer information in the printed manual.
<b>Reconstitution</b>	Please refer to the printed manual for detailed information.

## Data



> 97 % as determined by reducing SDS-PAGE.

## Background

Carboxypeptidase A1 [CPA1] is secreted as a pancreatic procarboxypeptidase, and cleaves the C-terminal amide or ester bond of peptides that have a free C-terminal carboxyl group, with the preference of residues with aromatic or branched aliphatic side chains. CPA1 comprises a signal peptide, a pro region and a mature chain, and can be activated after cleavage of the pro peptide. In contrast to procarboxypeptidase B which was always secreted by the pancreas as a monomer, procarboxypeptidase A occurs as a monomer and/or associated to one or two functionally different proteins,

## For Research Use Only

A Reliable Research Partner in Life Science and Medicine

Toll-free: 1-888-852-8623

Web: [www.elabscience.com](http://www.elabscience.com)

Tel: 1-832-243-6086

Email: [techsupport@elabscience.com](mailto:techsupport@elabscience.com)

Fax: 1-832-243-6017

# Recombinant Human Carboxypeptidase A1/CPA1 Protein (His Tag)



Catalog Number:PKSH031565

---

such as zymogen E, and is involved in zymogen inhibition. Three different forms of human pancreatic procarboxypeptidase A have been isolated.

---

## For Research Use Only

A Reliable Research Partner in Life Science and Medicine

Toll-free: 1-888-852-8623

Web: [www.elabscience.com](http://www.elabscience.com)

Tel: 1-832-243-6086

Email: [techsupport@elabscience.com](mailto:techsupport@elabscience.com)

Fax: 1-832-243-6017