

# Recombinant Mouse PDGFR $\alpha$ /CD140a Protein (Fc Tag)

Catalog Number: PKSM041120



**Note:** Centrifuge before opening to ensure complete recovery of vial contents.

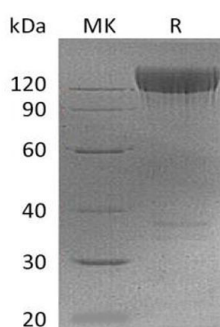
## Description

<b>Species</b>	Mouse
<b>Mol_Mass</b>	83.2 kDa
<b>Accession</b>	P26618
<b>Bio-activity</b>	Not validated for activity

## Properties

<b>Purity</b>	> 95 % as determined by reducing SDS-PAGE.
<b>Endotoxin</b>	< 1.0 EU per $\mu$ g of the protein as determined by the LAL method.
<b>Storage</b>	Generally, lyophilized proteins are stable for up to 12 months when stored at -20 to -80 °C. Reconstituted protein solution can be stored at 4-8°C for 2-7 days. Aliquots of reconstituted samples are stable at < -20°C for 3 months.
<b>Shipping</b>	This product is provided as lyophilized powder which is shipped with ice packs.
<b>Formulation</b>	Lyophilized from a 0.2 $\mu$ m filtered solution of PBS, pH 7.4. Normally 5% - 8% trehalose, mannitol and 0.01% Tween 80 are added as protectants before lyophilization. Please refer to the specific buffer information in the printed manual.
<b>Reconstitution</b>	Please refer to the printed manual for detailed information.

## Data



> 95 % as determined by reducing SDS-PAGE.

## Background

Platelet-derived growth factor receptors (PDGFR) are cell surface tyrosine kinase receptors for members of the platelet-derived growth factor (PDGF) family. The PDGF family consists of PDGF-A, -B, -C and -D, which form either homo- or heterodimers (PDGF-AA, -AB, -BB, -CC, -DD). The four PDGFs are inactive in their monomeric forms. PDGFs bind to the protein tyrosine kinase receptors PDGF receptor- $\alpha$  and - $\beta$ . These two receptor isoforms dimerize upon binding the PDGF dimer, leading to three possible receptor combinations, namely - $\alpha\alpha$ , - $\beta\beta$  and - $\alpha\beta$ . PDGFR $\alpha$  and PDGFR $\beta$  are members of the class III RTK family. Inappropriate PDGFR $\alpha$  and PDGFR $\beta$  signaling has been linked to a number of proliferative disorders.

## For Research Use Only

A Reliable Research Partner in Life Science and Medicine  
Tel:400-999-2100

Email:[techsupport@elabscience.cn](mailto:techsupport@elabscience.cn)

Web:[www.elabscience.cn](http://www.elabscience.cn)

Rev. V3.2