

Recombinant CD62L/L-Selectin/SELL Monoclonal Antibody

catalog number: **AN300464P**

Note: Centrifuge before opening to ensure complete recovery of vial contents.

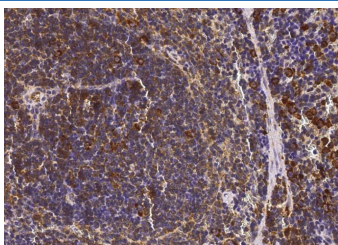
Description

Reactivity	Mouse
Immunogen	Recombinant Mouse CD62L/L-Selectin/SELL Protein
Host	Rabbit
Isotype	IgG
Clone	9B1
Purification	Protein A
Buffer	0.2 µm filtered solution in PBS

Applications Recommended Dilution

IHC-P	1:100-1:500
--------------	-------------

Data



Immunohistochemistry of paraffin-embedded mouse spleen
using CD62L/L-Selectin/SELL Monoclonal Antibody at
dilution of 1:200.

Preparation & Storage

Storage	This antibody can be stored at 2°C-8°C for one month without detectable loss of activity. Antibody products are stable for twelve months from date of receipt when stored at -20°C to -80°C. Preservative-Free. Avoid repeated freeze-thaw cycles.
Shipping	Ice bag

Background

This gene encodes a cell surface adhesion molecule that belongs to a family of adhesion/homing receptors. The encoded protein contains a C-type lectin-like domain, a calcium-binding epidermal growth factor-like domain, and two short complement-like repeats. The gene product is required for binding and subsequent rolling of leucocytes on endothelial cells, facilitating their migration into secondary lymphoid organs and inflammation sites. Single-nucleotide polymorphisms in this gene have been associated with various diseases including immunoglobulin A nephropathy. Alternatively spliced transcript variants have been found for this gene.

For Research Use Only

Toll-free: 1-888-852-8623
Web: www.elabscience.com

Tel: 1-832-243-6086
Email: techsupport@elabscience.com

Fax: 1-832-243-6017

Rev. V1.0