

# Recombinant Human Endoglin/CD105 Protein (Fc Tag)



Catalog Number: PKSH031832

**Note:** Centrifuge before opening to ensure complete recovery of vial contents.

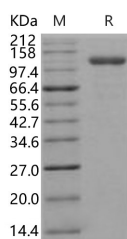
## Description

<b>Synonyms</b>	Endoglin;END;CD105;ENG;HHT1;ORW1
<b>Species</b>	Human
<b>Expression Host</b>	HEK293 Cells
<b>Sequence</b>	Met 1-Gly 586
<b>Accession</b>	NP_001108225.1
<b>Calculated Molecular Weight</b>	87.5 kDa
<b>Observed molecular weight</b>	115-120 kDa
<b>Tag</b>	C-hFc
<b>Bioactivity</b>	1. Measured by its ability to bind biotinylated Human TGFRB1 in a functional ELISA. 2. Measured by its ability to bind biotinylated Human ALK1-Fc in functional Elisa.

## Properties

<b>Purity</b>	> 95 % as determined by reducing SDS-PAGE.
<b>Endotoxin</b>	< 1.0 EU per µg of the protein as determined by the LAL method.
<b>Storage</b>	Generally, lyophilized proteins are stable for up to 12 months when stored at -20 to -80°C. Reconstituted protein solution can be stored at 4-8°C for 2-7 days. Aliquots of reconstituted samples are stable at < -20°C for 3 months.
<b>Shipping</b>	This product is provided as lyophilized powder which is shipped with ice packs.
<b>Formulation</b>	Lyophilized from sterile PBS, pH 7.4 Normally 5 % - 8 % trehalose, mannitol and 0.01 % Tween80 are added as protectants before lyophilization. Please refer to the specific buffer information in the printed manual.
<b>Reconstitution</b>	Please refer to the printed manual for detailed information.

## Data



> 95 % as determined by reducing SDS-PAGE.

## Background

Endoglin, also known as CD105, is a type I homodimeric transmembrane glycoprotein with a large, disulfide-linked, extracellular region and a short, constitutively phosphorylated cytoplasmic tail. Endoglin contains an RGD tripeptide which is a key recognition structure in cellular adhesion, suggesting a critical role for endoglin in the binding of endothelial cells to integrins and/or other RGD receptors. Endoglin is highly expressed on vascular endothelial cells, chondrocytes, and syncytiotrophoblasts of term placenta. It is also found on activated monocytes, mesenchymal stem cells

## For Research Use Only

A Reliable Research Partner in Life Science and Medicine

Toll-free: 1-888-852-8623

Web: [www.elabscience.com](http://www.elabscience.com)

Tel: 1-832-243-6086

Email: [techsupport@elabscience.com](mailto:techsupport@elabscience.com)

Fax: 1-832-243-6017

# Recombinant Human Endoglin/CD105 Protein (Fc Tag)<sup>dg</sup>

Catalog Number:PKSH031832

**DIA • AN**<sup>®</sup>  
by Elabscience

and leukemic cells of lymphoid and myeloid lineages. As an accessory receptor for the TGF- $\beta$  superfamily ligands, endoglin binds TGF- $\beta$ 1 and TGF- $\beta$ 3 with high affinity not by itself but by associating with TGF- $\beta$  type II receptor (T $\beta$ RII) and activates the downstream signal pathways. In addition, in human umbilical vein endothelial cells, ALK-1 is also a receptor kinase for endoglin threonine phosphorylation, and mutations in either of the two genes result in the autosomal-dominant vascular dysplasia, hereditary hemorrhagic telangiectasia (HHT). Endoglin has been regarded as a powerful biomarker of neovascularization, and is associated with several solid tumor types.

---

## For Research Use Only

A Reliable Research Partner in Life Science and Medicine

Toll-free: 1-888-852-8623

Web: [www.elabscience.com](http://www.elabscience.com)

Tel: 1-832-243-6086

Email: [techsupport@elabscience.com](mailto:techsupport@elabscience.com)

Fax: 1-832-243-6017