

Purified Anti-Human HLA-DR Antibody[L243]

catalog number: E-AB-F1111A

Note: Centrifuge before opening to ensure complete recovery of vial contents.

Description

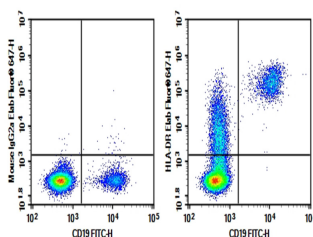
| | |
|---------------------|---|
| Reactivity | Human |
| Immunogen | Recombinant Human HLA-DR protein |
| Host | Mouse |
| Isotype | Mouse IgG2a, κ |
| Clone | L243 |
| Purification | >98%, Protein A/G purified |
| Buffer | Phosphate-buffered solution, pH 7.2, containing 0.05% non-protein stabilizer. Dialyze to completely remove the stabilizer prior to labeling. |

Applications

Recommended Dilution

| | |
|------------|---|
| FCM | 2 $\mu\text{g/mL}$ (0.5×10^6 - 1×10^6 cells) |
|------------|---|

Data



Human peripheral blood lymphocytes were stained with 0.2 μg Purified Anti-Human HLA-DR Antibody[L243](Right) and 0.2 μg Mouse IgG2a, κ Isotype Control(Left), followed by

Elab Fluor® 647-conjugated Goat Anti-Mouse IgG Secondary Antibody, then anti-Human CD19 FITC-conjugated Monoclonal Antibody.

Preparation & Storage

| | |
|-----------------|--|
| Storage | Store at 4°C valid for 12 months or -20°C valid for long term storage, avoid freeze / thaw cycles. |
| Shipping | Ice bag |

Background

HLA-DR is a heterodimeric cell surface glycoprotein comprised of a 36 kD α (heavy) chain and a 27 kD β (light) chain. It is expressed on B cells, activated T cells, monocytes/macrophages, dendritic cells, and other non-professional APCs. In conjunction with the CD3/TCR complex and CD4 molecules, HLA-DR is critical for efficient peptide presentation to CD4+ T cells.

For Research Use Only