

RRP8 Polyclonal Antibody

catalog number: E-AB-19047

Note: Centrifuge before opening to ensure complete recovery of vial contents.

Description

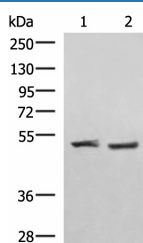
Reactivity	Human;Mouse;Rat
Immunogen	Fusion protein of human RRP8
Host	Rabbit
Isotype	IgG
Purification	Antigen affinity purification
Conjugation	Unconjugated
buffer	Phosphate buffered solution, pH 7.4, containing 0.05% stabilizer and 50% glycerol.

Applications

Recommended Dilution

WB	1:500-1:2000
IHC	1:50-1:300

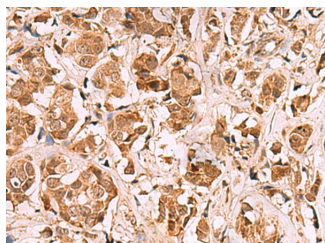
Data



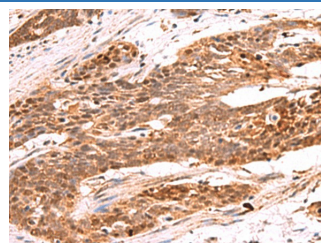
Western blot analysis of Human cerebella tissue K562 cell lysates using RRP8 Polyclonal Antibody at dilution of 1:1000

Observed-MV: Refer to figures

Calculated-MV: 51 kDa



Immunohistochemistry of paraffin-embedded Human breast cancer tissue using RRP8 Polyclonal Antibody at dilution of 1:80 (x200)



Immunohistochemistry of paraffin-embedded Human esophagus cancer tissue using RRP8 Polyclonal Antibody at dilution of 1:80 (x200)

Preparation & Storage

Storage	Store at -20°C Valid for 12 months. Avoid freeze / thaw cycles.
Shipping	The product is shipped with ice pack, upon receipt, store it immediately at the temperature recommended.

Background

RRP8 (Ribosomal RNA Processing 8, Methyltransferase, Homolog (Yeast)) is a Protein Coding gene. Diseases associated with RRP8 include Breast Abscess and Bowen-Conradi Syndrome. Among its related pathways are Activated PKN1 stimulates transcription of AR (androgen receptor) regulated genes KLK2 and KLK3 and Gene Expression. GO annotations related to this gene include poly(A) RNA binding and methylated histone binding.

For Research Use Only