

# ATP5L Polyclonal Antibody

Catalog Number:E-AB-52677



**Note:** Centrifuge before opening to ensure complete recovery of vial contents.

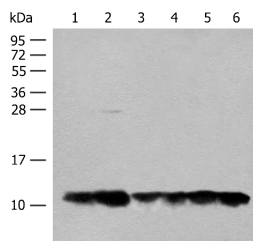
## Description

<b>Reactivity</b>	Human, Mouse
<b>Immunogen</b>	Fusion protein of human ATP5L
<b>Host</b>	Rabbit
<b>Isotype</b>	IgG
<b>Purification</b>	Antigen affinity purification
<b>Conjugation</b>	Unconjugated
<b>Formulation</b>	PBS with 0.05% NaN <sub>3</sub> and 40% Glycerol,pH7.4

## Applications Recommended Dilution

<b>WB</b>	1:500-1:2000
<b>ELISA</b>	1:5000-1:10000

## Data



Western blot analysis of 293T cell Human fetal liver tissue lysates using ATP5L Polyclonal Antibody at dilution of 1:500

**Observed MW:Refer to figures**  
**Calculated Mw:11 kDa**

## Preparation & Storage

**Storage** Store at -20°C. Avoid freeze / thaw cycles.

## Background

Mitochondrial ATP synthase catalyzes ATP synthesis, utilizing an electrochemical gradient of protons across the inner membrane during oxidative phosphorylation. It is composed of two linked multi-subunit complexes: the soluble catalytic core, F<sub>1</sub>, and the membrane-spanning component, F<sub>o</sub>, which comprises the proton channel. The F<sub>1</sub> complex consists of 5 different subunits (alpha, beta, gamma, delta, and epsilon) assembled in a ratio of 3 alpha, 3 beta, and a single representative of the other 3. The F<sub>o</sub> seems to have nine subunits (a, b, c, d, e, f, g, F6 and 8). This gene encodes the g subunit of the F<sub>o</sub> complex. Alternative splicing results in multiple transcript variants.

## For Research Use Only

A Reliable Research Partner in Life Science and Medicine

Toll-free: 1-888-852-8623

Web: [www.elabscience.com](http://www.elabscience.com)

Tel: 1-832-243-6086

Email: [techsupport@elabscience.com](mailto:techsupport@elabscience.com)

Fax: 1-832-243-6017