

Recombinant S100A1 Monoclonal Antibody

catalog number: AN300114P

Note: Centrifuge before opening to ensure complete recovery of vial contents.

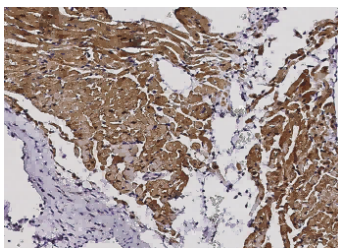
Description

Reactivity	Mouse
Immunogen	Recombinant Mouse S100A1 protein
Host	Rabbit
Isotype	IgG
Clone	12F10
Purification	Protein A
Buffer	0.2 µm filtered solution in PBS

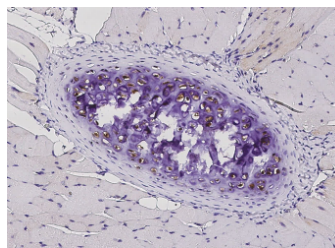
Applications Recommended Dilution

IHC-P	1:100-1:500
--------------	-------------

Data



Immunohistochemistry of paraffin-embedded mouse heart using S100A1 Monoclonal Antibody at dilution of 1:200.



Immunohistochemistry of paraffin-embedded mouse bone using S100A1 Monoclonal Antibody at dilution of 1:200.

Preparation & Storage

Storage	This antibody can be stored at 2°C-8°C for one month without detectable loss of activity. Antibody products are stable for twelve months from date of receipt when stored at -20°C to -80°C. Preservative-Free. Avoid repeated freeze-thaw cycles.
Shipping	Ice bag

Background

S100A1 is a Ca²⁺ binding protein of the EF-hand type that belongs to the S100 protein family. S100 proteins consisting of at least 19 members exist as dimers in the cytoplasm and/or nucleus of a wide range of cells, and are involved in the regulation of a number of cellular processes such as cell-cycle progression and cell differentiation. This protein has been shown to function in the processes including stimulation of Ca²⁺-induced Ca²⁺ release, inhibition of microtubule assembly, and inhibition of PKC-mediated phosphorylation. Phosphoglucomutase is a target protein whose activity is antagonistically regulated by S100A1, and recently, S100A1 is also identified as a potent molecular chaperone and a new member of the Hsp70/Hsp90 multichaperone complex. S100A1 displays a tissue-specific expression pattern with highest levels in myocardium and is considered to be an important regulator of cardiac contractility. Accordingly, reduced expression or mutations of S100A1 gene have been implicated in cardiomyopathies.

For Research Use Only