

# K-Cadherin Polyclonal Antibody

catalog number: E-AB-10867

**Note:** Centrifuge before opening to ensure complete recovery of vial contents.

## Description

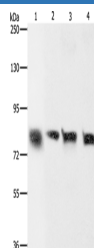
<b>Reactivity</b>	Human;Mouse;Rat
<b>Immunogen</b>	Recombinant protein of human CDH6
<b>Host</b>	Rabbit
<b>Isotype</b>	IgG
<b>Purification</b>	Affinity purification
<b>Conjugation</b>	Unconjugated
<b>buffer</b>	Phosphate buffered solution, pH 7.4, containing 0.05% stabilizer and 50% glycerol.

## Applications

## Recommended Dilution

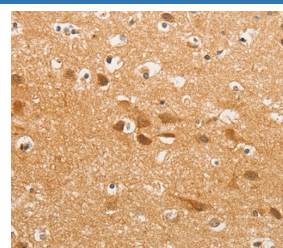
<b>WB</b>	1:500-1:2000
<b>IHC</b>	1:50-1:200

## Data



Western Blot analysis of Hela and A549 cell, Human liver cancer tissue and HT-29 cell using K-Cadherin Polyclonal Antibody at dilution of 1:500

**Calculated-MV:88 kDa**



Immunohistochemistry of paraffin-embedded Human brain using K-Cadherin Polyclonal Antibody at dilution of 1:50

## Preparation & Storage

<b>Storage</b>	Store at -20°C Valid for 12 months. Avoid freeze / thaw cycles.
<b>Shipping</b>	The product is shipped with ice pack, upon receipt, store it immediately at the temperature recommended.

## Background

This gene encodes a member of the cadherin superfamily. Cadherins are membrane glycoproteins that mediate homophilic cell-cell adhesion and play critical roles in cell differentiation and morphogenesis. The encoded protein is a type II cadherin and may play a role in kidney development as well as endometrium and placenta formation. Decreased expression of this gene may be associated with tumor growth and metastasis.

## For Research Use Only