

ATP5L Polyclonal Antibody

Catalog Number:E-AB-18764



Note: Centrifuge before opening to ensure complete recovery of vial contents.

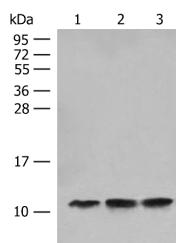
Description

Reactivity	Human, Mouse
Immunogen	Fusion protein of human ATP5L
Host	Rabbit
Isotype	IgG
Purification	Antigen affinity purification
Conjugation	Unconjugated
Formulation	PBS with 0.05% NaN ₃ and 40% Glycerol,pH7.4

Applications Recommended Dilution

WB	1:500-1:2000
ELISA	1:5000-1:10000

Data



Western blot analysis of Human fetal liver tissue Hela cell HEPG2 cell lysates using ATP5L Polyclonal Antibody at dilution of 1:500
Observed MW:Refer to figures
Calculated Mw:11 kDa

Preparation & Storage

Storage Store at -20°C. Avoid freeze / thaw cycles.

Background

Mitochondrial ATP synthase catalyzes ATP synthesis, utilizing an electrochemical gradient of protons across the inner membrane during oxidative phosphorylation. It is composed of two linked multi-subunit complexes: the soluble catalytic core, F₁, and the membrane-spanning component, F_o, which comprises the proton channel. The F₁ complex consists of 5 different subunits (alpha, beta, gamma, delta, and epsilon) assembled in a ratio of 3 alpha, 3 beta, and a single representative of the other 3. The F_o seems to have nine subunits (a, b, c, d, e, f, g, F6 and 8). This gene encodes the g subunit of the F_o complex. Alternative splicing results in multiple transcript variants.

For Research Use Only

A Reliable Research Partner in Life Science and Medicine

Toll-free: 1-888-852-8623

Web: www.elabscience.com

Tel: 1-832-243-6086

Email: techsupport@elabscience.com

Fax: 1-832-243-6017