

Recombinant Human HSPB8 Protein (His Tag)

Catalog Number:PKSH032525



Note: Centrifuge before opening to ensure complete recovery of vial contents.

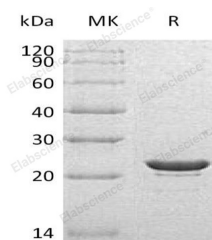
Description

Synonyms	Heat shock protein beta-8;HspB8;Alpha-crystallin C chain;E2-induced gene 1 protein;Protein kinase H11;Small stress protein-like protein HSP22;HSPB8;CRYAC;E2IG1;HSP22
Species	Human
Expression Host	E.coli
Sequence	Met 1-Thr196
Accession	Q9UJY1
Calculated Molecular Weight	22.7 kDa
Observed molecular weight	23 kDa
Tag	C-His

Properties

Purity	> 95 % as determined by reducing SDS-PAGE.
Endotoxin	< 1.0 EU per µg of the protein as determined by the LAL method.
Storage	Store at < -20°C, stable for 6 months. Please minimize freeze-thaw cycles.
Shipping	This product is provided as liquid. It is shipped at frozen temperature with blue ice/gel packs. Upon receipt, store it immediately at < - 20°C.
Formulation	Supplied as a 0.2 µm filtered solution of 20mM PB, 150mM NaCl, 5mM EDTA, pH 7.4.
Reconstitution	Not Applicable

Data



> 95 % as determined by reducing SDS-PAGE.

Background

Heat shock protein beta-8 (HSPB8) belongs to the small heat shock protein (HSP20) family. This protein can be induced by 17-beta-estradiol, and is predominantly expressed in skeletal muscle and heat, mainly located in the cytoplasm and nucleus. HSPB8 usually exists in monomer, it can interact with HSPB1 and DNAJB6. HSPB8 displays temperature-dependent chaperone activity, appears to be involved in regulation of cell proliferation, apoptosis, and carcinogenesis, and mutations in this gene have been associated with different neuromuscular diseases, including Charcot-Marie-Tooth disease.

For Research Use Only

A Reliable Research Partner in Life Science and Medicine

Toll-free: 1-888-852-8623

Web: www.elabscience.com

Tel: 1-832-243-6086

Email: techsupport@elabscience.com

Fax: 1-832-243-6017